



# HAAS CABINET CO., INC.

## SPECIFICATIONS AND DOOR STYLES

SIGNATURE SERIES • PATRIOT SERIES • LIFESTYLE SERIES

Effective April 1, 2021

Bookmarks available for  
easier navigation.  
Please contact your Haas dealer for  
complete product information.

Replaces February 1, 2018 and supersedes all supplements.



## SIGNATURE SERIES • HAAS DOOR STYLES PRICE CATEGORIES – "A" Available

DOOR STYLE NAME	DOOR STYLE TYPE	DOOR STYLE PAGE NO.	CHERRY	HICKORY	RUSTIC HICKORY	MAPLE	OAK	HDF
Arlington (AR)	<i>Inset</i>	DS-1	—	—	—	A	—	—
Boston (BO)	<i>Full Overlay</i>	DS-1	—	A	A	A	—	—
Brooklyn (BK)	<i>Full Overlay</i>	DS-2	A	—	—	A	—	—
Cambridge (CA)	<i>Full Overlay</i>	DS-2	A	—	—	A	—	—
Concord (CD)	<i>Inset</i>	DS-3	A	A	—	A	—	—
Dover (DV)	<i>Full Overlay</i>	DS-3	A	A	—	A	—	—
Dresden (DR)	<i>Partial Overlay</i>	DS-4	A	A	A	A	—	—
Estate (ET)	<i>Full Overlay</i>	DS-4	A	A	A	A	A	—
Federal (FD)	<i>Partial Overlay</i>	DS-5	A	A	A	A	A	—
Franklin (FR)	<i>Partial Overlay</i>	DS-5	—	—	—	A	—	—
Hampton (HP)	<i>Full Overlay</i>	DS-6	A	—	—	A	—	—
Hermitage (HE)	<i>Full Overlay</i>	DS-6	A	—	—	A	—	—
Jamestown (JA)	<i>Inset</i>	DS-7	A	A	—	A	—	—
Lancaster (LA)	<i>Partial Overlay</i>	DS-7	A	A	A	A	A	—
Lexington (LX)	<i>Full Overlay</i>	DS-8	A	—	—	A	—	—
Madison (MA)	<i>Partial Overlay</i>	DS-8	A	A	—	A	A	—
Manhattan (MH)	<i>Full Overlay</i>	DS-9	—	—	—	—	—	A
Mission (MI)	<i>Full Overlay</i>	DS-9	A	A	A	A	A	—
Monticello (MO)	<i>Full Overlay</i>	DS-10	A	—	—	A	—	—
Pembroke (PMM)	<i>Full Overlay</i>	DS-10	—	—	—	A	—	—
Plantation (PA)	<i>Full Overlay</i>	DS-11	A	—	—	A	A	—
Pleasant Hill (PH)	<i>Partial Overlay</i>	DS-11	A	A	A	A	A	—
Plymouth (PL)	<i>Full Overlay</i>	DS-12	A	A	—	A	—	—
Plymouth-V (PLV)	<i>Full Overlay</i>	DS-12	A	A	—	A	—	—
Prescott (PR)	<i>Full Overlay</i>	DS-13	A	A	—	A	—	—
Richmond (RI)	<i>Inset</i>	DS-13	A	A	—	A	—	—
Shakertown (SH)	<i>Full Overlay</i>	DS-14	A	A	—	A	A	—
Shakertown-V (SHV)	<i>Full Overlay</i>	DS-14	A	A	A	A	A	—
Soho (OO)	<i>Full Overlay</i>	DS-15	A	—	—	A	—	—
Sonoma (SN)	<i>Full Overlay</i>	DS-15	A	—	—	A	—	—
Tudor (TD)	<i>Full Overlay</i>	DS-16	A	A	—	A	—	—
Verona (VN)	<i>Full Overlay</i>	DS-16	A	A	—	A	—	—
Villa (VI)	<i>Full Overlay</i>	DS-17	A	A	A	A	A	—
Winchester (WNM)	<i>Partial Overlay</i>	DS-17	—	—	—	A	—	—

## Patriot Series

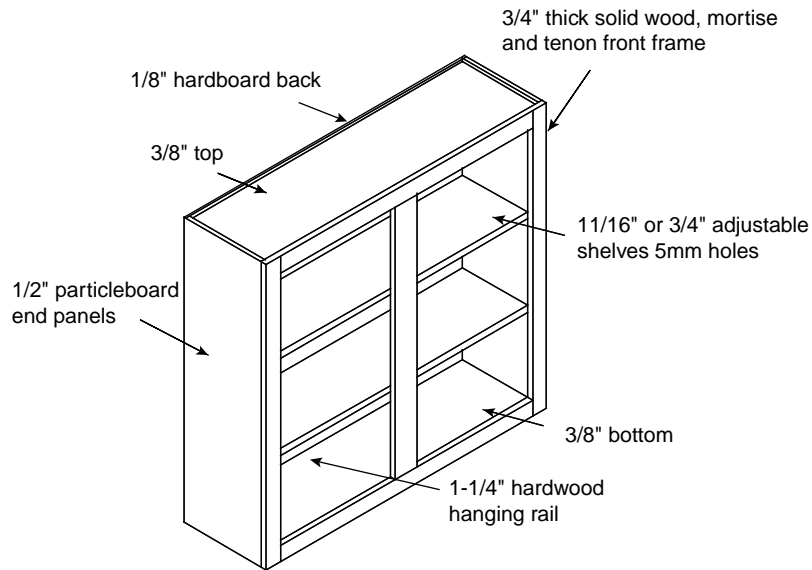
DOOR STYLE: INDEPENDENCE WHITE

Specifications for PATRIOT SERIES (pages PS-1-2-3) located after the "SIGNATURE section" behind the DOOR STYLES tab.



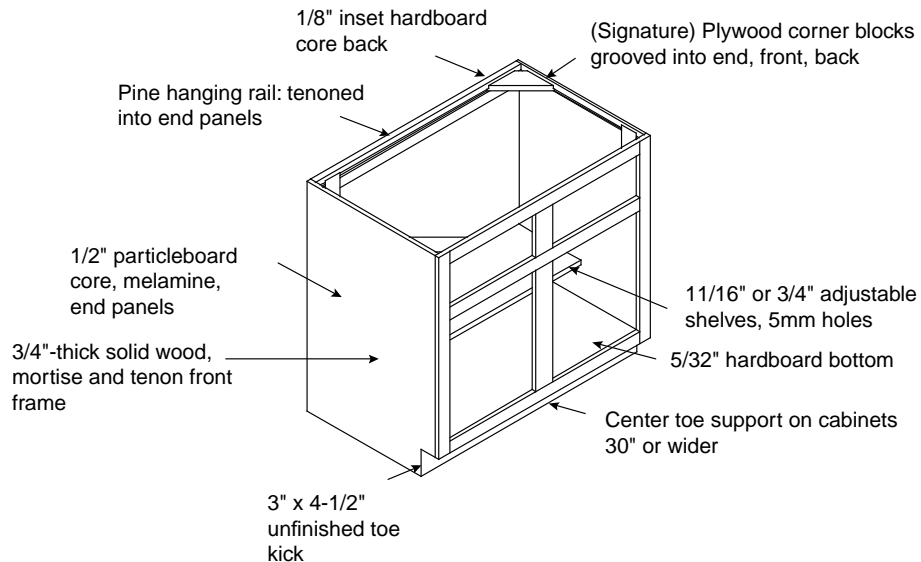
# Case Construction

## SIGNATURE SERIES Wall Case Construction



All-wood case available. See details on MO-1.

## SIGNATURE SERIES Base Case Construction

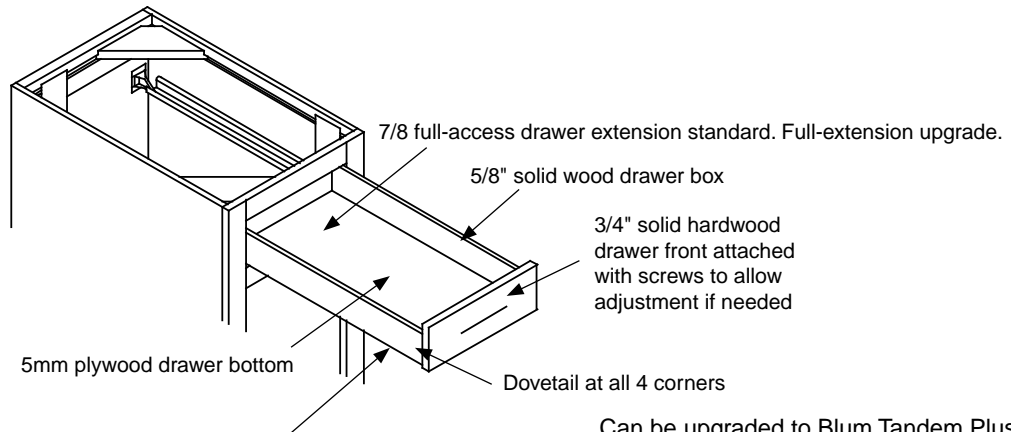


All-wood case available. See details on MO-1.

# Drawer Construction - Door Styling



## SIGNATURE SERIES Standard Drawer Construction



Blum Tandem edge undermount ball bearing guides with soft-close feature. Rated at 75 lbs. dynamic capacity, 100 lb. static.

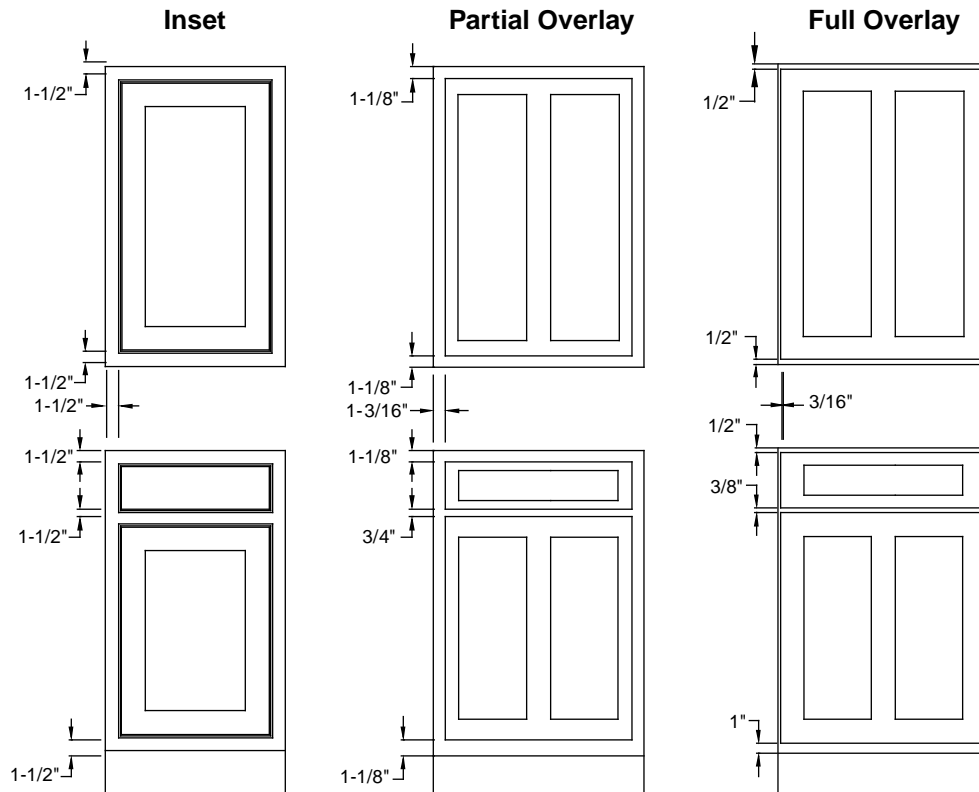
Can be upgraded to Blum Tandem Plus full-extension, undermount ball bearing guide with soft-close feature. Rated at 90lbs dynamic capacity, 100lbs static (#300, \$\$\$ drawer).

## SIGNATURE: Door Styling – Reveals and Construction

Signature door styles are manufactured as inset, partial, or full overlay construction. The reveals (areas of exposed face frame surrounding doors and drawer fronts) are different depending on the door style selected.

Door dimensions (drawer front dimension, if applicable) varies with the height of wall, base, vanity, tall or custom cabinets, but the reveal remains constant. Inset doors will have 1/8" gap between door and frame edges. Other dimensions are listed below.

All doors use 6-way adjustable, soft-close hinges.





# Dimensional Charts for Corner Applications

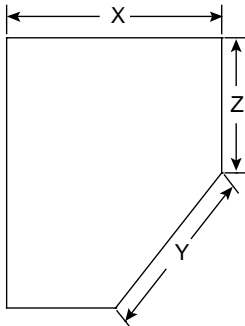
## 45° Diagonal Calculations

Wall dimensions "X" shown in 3" increments. See chart for diagonal front measurements "Y" for 12", 18", 21" or 24" deep wall or base cabinet.

"X" Wall Dimension in 3" Increments	"Y" with "Z" = 12"	"Y" with "Z" = 18"	"Y" with "Z" = 21"	"Y" with "Z" = 24"
21"	12-3/4	4-1/2	--	--
24"	16-31/32	8-1/2	4-1/4	--
27"	21-7/32	12-3/4	8-1/2	4-1/4
30"	25-7/16	16-31/32	12-3/4	8-1/2
33"	29-11/16	21-7/32	16-31/32	12-3/4
36"	33-15/16	25-7/16	21-7/32	16-31/32
39"	38-3/16	29-11/16	25-7/16	21-7/32
42"	42-7/16	33-15/16	29-11/16	25-7/16
45"	46-21/32	38-3/16	33-15/16	29-11/16
48"	50-29/32	42-7/16	38-3/16	33-15/16
51"	55-5/32	46-21/32	42-7/16	38-3/16
54"	59-3/8	50-29/32	46-21/32	42-7/16
57"	63-5/8	55-5/32	50-29/32	46-21/32
60"	67-7/8	59-3/8	55-5/32	50-29/32

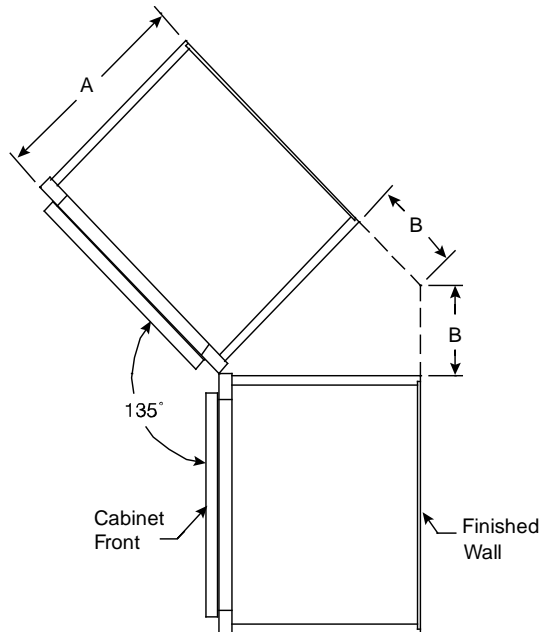
Diagonal front dimensions "Y" shown in 3" increments. See chart for wall measurements "X" for 12", 18", 21", or 24" deep wall or base cabinet.

Diagonal Face "Y" Dimension in 3" Increments	"X" with Depth Dimension "Z" = 12"	"X" with Depth Dimension "Z" = 18"	"X" with Depth Dimension "Z" = 21"	"X" with Depth Dimension "Z" = 24"
12"	20-1/2	26-1/2	29-1/2	32-1/2
15"	22-19/32	28-19/32	31-19/32	34-19/32
18" and (DCF36)	24-23/32	30-23/32	33-23/32	36-23/32
21" and (DCF39)	26-27/32	32-27/32	35-27/32	38-27/32
24" and (DCF42)	28-31/32	34-31/32	37-31/32	40-31/32
27"	31-3/32	37-3/32	40-3/32	43-3/32
30"	33-7/32	39-7/32	42-7/32	45-7/32
33"	35-11/32	41-11/32	44-11/32	47-11/32
36"	37-15/32	43-15/32	46-15/32	49-15/32
39"	39-9/16	45-9/16	48-9/16	51-9/16
42"	41-11/16	47-11/16	50-11/16	53-11/16
45"	43-13/16	49-13/16	52-13/16	55-13/16
48"	45-15/16	51-15/16	54-15/16	57-15/16
51"	48-1/16	54-15/16	57-15/16	60-15/16
54"	50-3/16	56-3/16	59-3/16	62-3/16
57"	52-5/16	58-5/16	61-5/16	64-5/16
60"	54-7/16	60-7/16	63-7/16	66-7/16



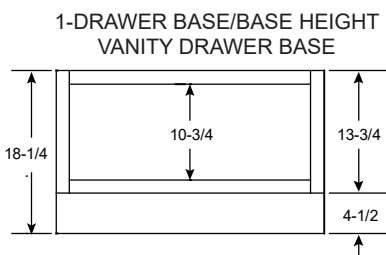
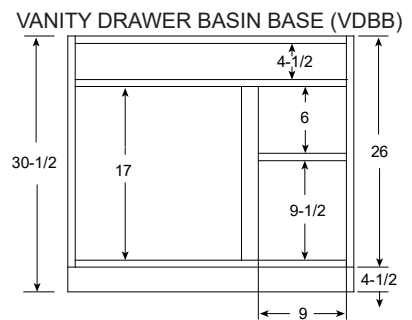
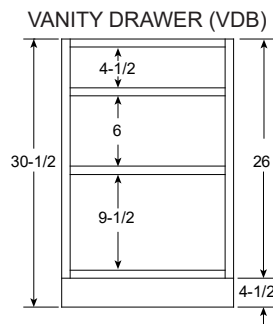
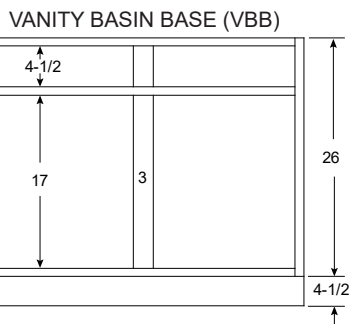
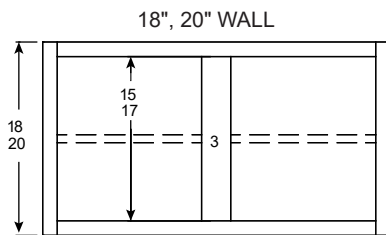
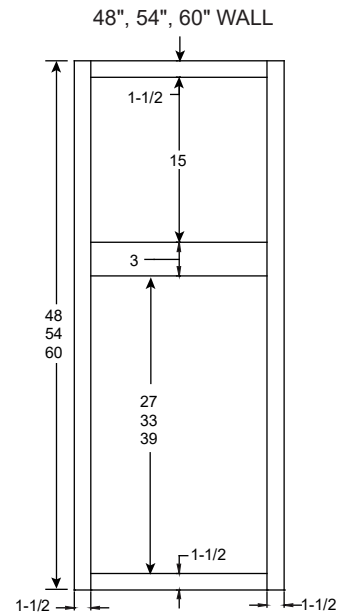
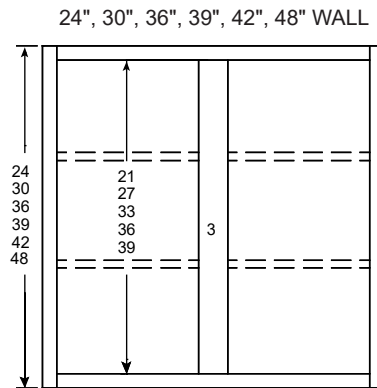
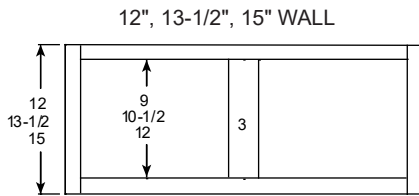
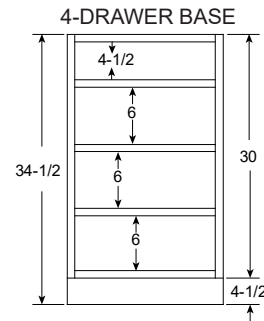
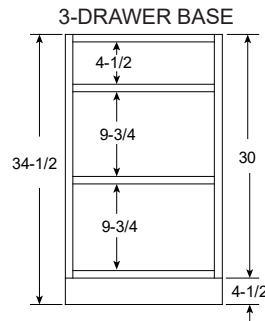
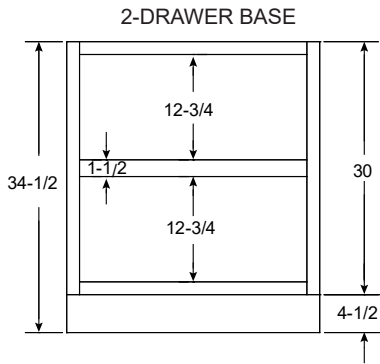
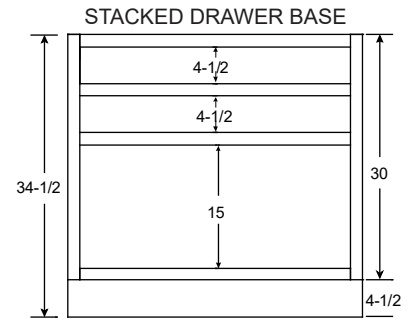
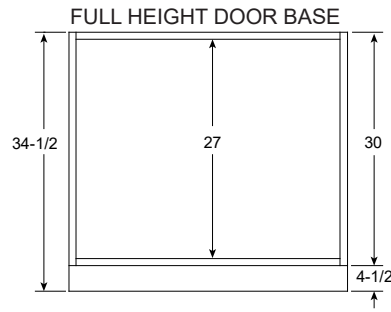
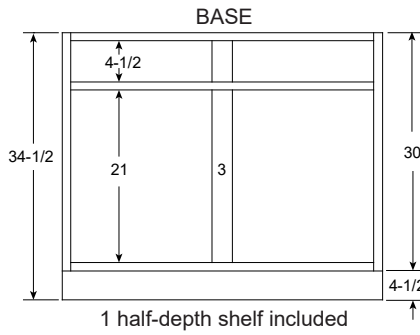
## 135° Diagonal Calculations

CABINET DEPTH	HOLD BACK FROM CORNER
"A"	"B"
9"	3-23/32"
12"	4-31/32"
15"	6-7/32"
18"	7-15/32"
21"	8-11/16"
24"	9-15/16"



**THIS PAGE IS INTENTIONALLY LEFT BLANK**

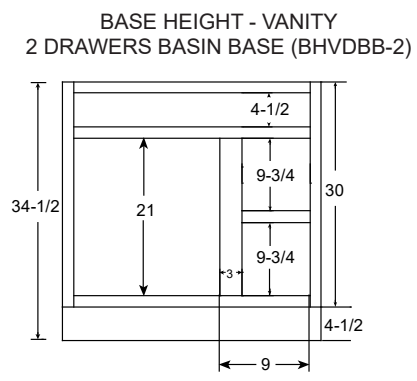
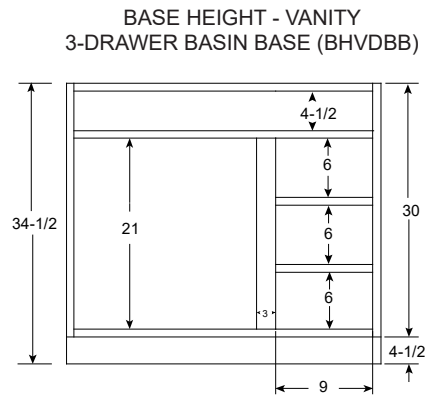
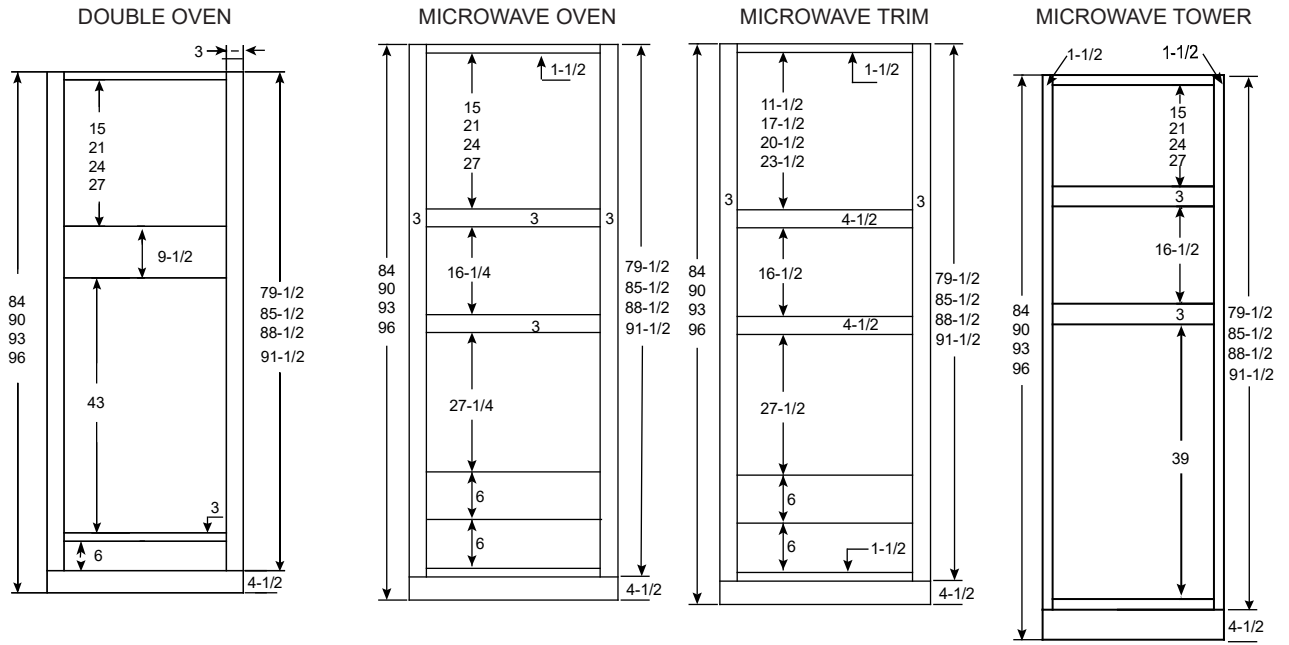
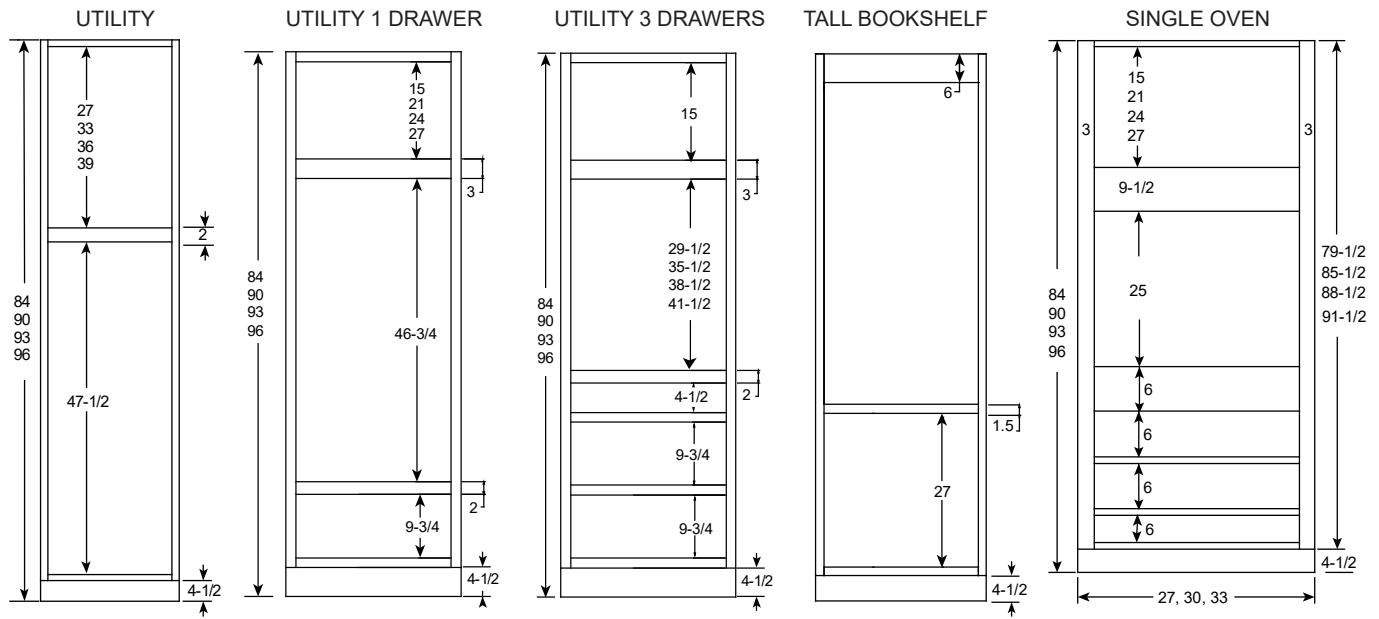
# Frame Dimensions





# Frame Dimensions

SPECIFICATIONS





## Warranty

### **FIVE-YEAR LIMITED CABINETRY WARRANTY:**

Cabinets manufactured by Haas Cabinet Co., Inc., are warranted to be free from defects in material and workmanship under normal use to the original consumer purchaser for a period of five (5) years from the date of purchase. This warranty is not transferable to subsequent owners. Unfinished product is not covered under this warranty.

Most Haas cabinet doors are solid wood. These doors will perform well in a variety of conditions if properly stored, handled, and installed. All wood products are designed and intended for controlled interior applications only. Any solid wood product will respond adversely to extreme conditions—especially extremely low or high humidity conditions. Mitered doors joints are especially subject to movement under these extreme conditions. Gaps that may develop in door joints due to these conditions are not subject to replacement under this warranty.

**LIFETIME LIMITED WARRANTY ON DRAWERS, DRAWER GUIDES AND HARDWARE:** All drawers manufactured by Haas Cabinet Co., Inc., are warranted to be free from defects in material and workmanship for as long as the original consumer purchaser owns the home where installed. All drawer guides and hinges are warranted by the manufacturer to be free from defects in material and workmanship for as long as the original consumer purchaser owns the home where installed. These warranties are not transferable to subsequent owners.

Haas warranties apply only to product used in single-family, non-rental, non-commercial residences. This warranty does not cover damage from misuse, abuse, neglect, improper storage, defects caused by installation or storage or transportation, moisture or heat-related damage, normal wear and tear, or acts of God.

Should defects in material or workmanship exist during this warranty period, Haas will elect at its discretion to either repair or replace free of charge the defective material or component, excluding labor costs. This warranty covers only parts and materials supplied by Haas, and does not cover costs for removal or reinstallation of counter tops, plumbing fixtures, appliances or related materials, or labor costs. Natural and environmental factors will affect cabinet products over time; therefore, Haas cannot be held responsible for replacement product that may not exactly color-match installed product.

Haas periodically updates and makes changes to its product line and specifications. If a warranty claim is filed against obsolete or changed product, Haas will replace the part(s) under warranty with a new part of the same style or with a similar style currently offered. Haas cannot be held responsible for replacement product that may not exactly match installed product.

**THIS WARRANTY IS THE EXCLUSIVE WARRANTY OF HAAS CABINET CO., INC. HAAS CABINET CO., INC., DISCLAIMS ALL OTHER WARRANTIES, EXPRESSED OR IMPLIED, INCLUDING THE WARRANTIES OF MERCHANTABILITY AND OF FITNESS FOR A PARTICULAR PURPOSE.**

Some states do not allow limitations on how long an implied warranty lasts or the exclusion or limitation of incidental or consequential damages, so the above limitations and exclusions may not apply to you. This warranty gives you specific legal rights, and you may also have other rights which vary from state to state.

To submit a warranty claim, the original consumer purchaser must contact the Haas dealer or distributor where the product was purchased. A copy of the original dated sales receipt must be presented as proof of purchase. The Haas dealer or distributor will contact the Haas sales representative who will inspect the product and submit his/her findings to the company for response.

If additional assistance is needed, please write to Haas Cabinet Co., Inc., Attention: Sales Manager, at 625 W. Utica Street, Sellersburg, Indiana 47172

**Note: This warranty covers Haas product purchased on or after May 1, 2000.**

# Effects of Moisture on Wood



Haas Cabinet uses properly kiln dried lumber with moisture content of 5%–8% on most wooden cabinet pieces. Properly controlled climate inside homes will maintain this wood moisture level and ensure that Haas products operate reliably and beautifully for years to come. It is the customer's responsibility to make certain that wooden cabinetry (and all fine wood products) is quickly installed in an indoor area where the relative humidity level is maintained between 25%–55%.

In high humidity conditions wood will absorb moisture and swell. Under low humidity conditions wood will release moisture and shrink. This swelling and shrinking is typically noticed in width (across the grain) and thickness. Wood will seldom increase or decrease in length due to moisture changes.

Normal, minor fluctuations in relative humidity will have minimal effect on the wood. As seasons change and humidity levels increase and decrease, normal household air conditioning and heating systems do a fine job of maintaining a relatively stable environment. Five-piece doors (2 rails, 2 side stiles, and a center panel) are engineered to allow some normal expansion and contraction without problems arising.

Uncontrolled extremes in humidity (over 80% or less than 20%) are likely to cause problems. These problems will most often be noticed along cabinet joint lines (door and frame joints). Extreme, uncontrolled humidity issues are NOT covered under the warranty of Haas Cabinet.

## Points to consider

- Dense woods such as Maple and Hickory will expand and contract more than softer woods like Cherry and Oak.
- Painted products will most likely develop a hairline crack along some joints during the lifetime of its use. This crack is due to the small natural expansion of the wood underneath and is considered normal in painted products. Generally, painted finishes will magnify joint separations. In January 2020 we began to switch most painted maple doors over to use a high-density, paintable, material to help reduce the cracking joint issues.
- Mitered doors are more likely to develop a noticeable crack along the door joint line than are mortise and tenon styles. This is due to the wood swelling or shrinking on both the rail and stile causing the end of the door joint (the tip) to go in opposite directions. Since painted finishes tend to magnify any joint separations, painted finishes should be used with this knowledge on any mitered door style.
- Excessively dry humidity levels (these can often occur in the winter when a home furnace has been running for months) can also cause issues by drying out the wood. This can cause door center panels (which are solid wood) to shrink, possibly exposing an unfinished edge that is hidden inside the door framing. Most often this issue will go away once the humidity levels increase, but can be touched up, on site, simply enough in most cases.
- In extremely dry or cold areas, winter humidifiers may be needed to make certain the relative humidity levels do not get too low (less than 25%).
- Products installed in non air-conditioned homes are most susceptible to damage due to excessive humidity levels. Winter and vacation homes should maintain climate controls year round.
- Products stored for a reasonable amount of time, prior to installation, should be fine. Excessively long storage of wooden cabinets in an uncontrolled environment (like most warehouses) are akin to installing them in a house without heating and air conditioning and could lead to problems.
- As cabinets age they will become much less sensitive to most environmental changes. They will tend to acclimate somewhat to their surroundings and stabilize.



## Care Instructions

---

### **WOOD EXTERIORS:**

Color and grain variations are natural characteristics in authentic wood surfaces. Since no two trees are exactly alike, these variations are evident in every piece of real wood. Natural variations are blended somewhat by the application of toners and stains. These finish applications are not designed to eliminate, but to enhance the charm and unique characteristics of the natural wood. The following care suggestions will ensure the longest possible service and beauty of the high-quality finish applied by Haas to your cabinets.

**AFTER INSTALLATION.** Use clean, soft cloths only when cleaning your cabinets. Clean all surfaces with a damp cloth, drying immediately with a dry cloth. If you choose to apply wax to the cabinets, pick a wax that contains no cleaner. Apply the wax as instructed in the "Furniture Treatment" section below.

**CLEANING.** Wipe the cabinet surfaces with a clean, damp cloth and then dry with a clean cloth. Mild soap and water applied with a clean cloth can be used to remove oil, grease or other material from the surface. All soap residues should be rinsed from the surface using a clean, damp cloth.

**SCRATCHES AND NICKS.** These can be eliminated or hidden by using a touch-up color marker on shallow scratches, or by using a matching wood-tone putty stick on deeper scratches or nicks. These areas can then be blended with surrounding areas using a light coat of wax. Touch-up markers and putty sticks are available from your local Haas dealer or the Haas Customer Service Department.

**FURNITURE TREATMENT.** To maintain the beauty of your cabinets, care for them as you would any piece of fine furniture. The state-of-the-art, ultraviolet-cured Haas finish does not require wax. However, if you do choose to wax your cabinets, apply the wax to a soft, clean cloth then use this cloth to wipe the surface of the cabinets.

**THINGS TO AVOID.** Do not wipe your cabinets with a dishcloth. A dishcloth can contain soap, grease and other soil that can be detrimental to the finished surface. Do not use detergents, strong soap, abrasive cleaners or self-polishing waxes which can also be harmful to the finish. Keep the finished surfaces dry. Dampness next to dishwashers, sinks and toe kick areas can cause finish damage and later damage to the underlying wood if not dried as it occurs.

**LIGHT CLEANING.** Clean all spills immediately using a soft cloth dampened with clean water, then dry immediately.

**HEAVIER CLEANING.** Oils, grease and other soils that do not respond to water can be removed with a solution of mild soap and water. The surface should be rinsed immediately with a clean, damp cloth and dried thoroughly.

**THINGS TO AVOID.** Do not use your dishcloth to clean your cabinets, because it may contain grease, detergent or other household chemicals that may damage the cabinet surface. Do not use wax on thermofoil or laminate cabinets.

### **INTERIOR SURFACES:**

The standard interior on Haas cabinets is a nonabsorbent vinyl surface that resists scuffing, marring and repels most household spills. Cabinets with finished wood interiors are protected by an ultraviolet-cured finish that is extremely durable. To clean either of these surfaces, simply wipe with a damp cloth or sponge and dry thoroughly with a clean, soft cloth.

## SIGNATURE SERIES • HAAS DOOR STYLES PRICE CATEGORIES – "A" Available

DOOR STYLE NAME	DOOR STYLE TYPE	DOOR STYLE PAGE NO.	CHERRY	HICKORY	RUSTIC HICKORY	MAPLE	OAK	HDF
Arlington (AR)	<i>Inset</i>	DS-1	—	—	—	A	—	—
Boston (BO)	<i>Full Overlay</i>	DS-1	—	A	A	A	—	—
Brooklyn (BK)	<i>Full Overlay</i>	DS-2	A	—	—	A	—	—
Cambridge (CA)	<i>Full Overlay</i>	DS-2	A	—	—	A	—	—
Concord (CD)	<i>Inset</i>	DS-3	A	A	—	A	—	—
Dover (DV)	<i>Full Overlay</i>	DS-3	A	A	—	A	—	—
Dresden (DR)	<i>Partial Overlay</i>	DS-4	A	A	A	A	—	—
Estate (ET)	<i>Full Overlay</i>	DS-4	A	A	A	A	A	—
Federal (FD)	<i>Partial Overlay</i>	DS-5	A	A	A	A	A	—
Franklin (FR)	<i>Partial Overlay</i>	DS-5	—	—	—	A	—	—
Hampton (HP)	<i>Full Overlay</i>	DS-6	A	—	—	A	—	—
Hermitage (HE)	<i>Full Overlay</i>	DS-6	A	—	—	A	—	—
Jamestown (JA)	<i>Inset</i>	DS-7	A	A	—	A	—	—
Lancaster (LA)	<i>Partial Overlay</i>	DS-7	A	A	A	A	A	—
Lexington (LX)	<i>Full Overlay</i>	DS-8	A	—	—	A	—	—
Madison (MA)	<i>Partial Overlay</i>	DS-8	A	A	—	A	A	—
Manhattan (MH)	<i>Full Overlay</i>	DS-9	—	—	—	—	—	A
Mission (MI)	<i>Full Overlay</i>	DS-9	A	A	A	A	A	—
Monticello (MO)	<i>Full Overlay</i>	DS-10	A	—	—	A	—	—
Pembroke (PMM)	<i>Full Overlay</i>	DS-10	—	—	—	A	—	—
Plantation (PA)	<i>Full Overlay</i>	DS-11	A	—	—	A	A	—
Pleasant Hill (PH)	<i>Partial Overlay</i>	DS-11	A	A	A	A	A	—
Plymouth (PL)	<i>Full Overlay</i>	DS-12	A	A	—	A	—	—
Plymouth-V (PLV)	<i>Full Overlay</i>	DS-12	A	A	—	A	—	—
Prescott (PR)	<i>Full Overlay</i>	DS-13	A	A	—	A	—	—
Richmond (RI)	<i>Inset</i>	DS-13	A	A	—	A	—	—
Shakertown (SH)	<i>Full Overlay</i>	DS-14	A	A	—	A	A	—
Shakertown-V (SHV)	<i>Full Overlay</i>	DS-14	A	A	A	A	A	—
Soho (OO)	<i>Full Overlay</i>	DS-15	A	—	—	A	—	—
Sonoma (SN)	<i>Full Overlay</i>	DS-15	A	—	—	A	—	—
Tudor (TD)	<i>Full Overlay</i>	DS-16	A	A	—	A	—	—
Verona (VN)	<i>Full Overlay</i>	DS-16	A	A	—	A	—	—
Villa (VI)	<i>Full Overlay</i>	DS-17	A	A	A	A	A	—
Winchester (WNM)	<i>Partial Overlay</i>	DS-17	—	—	—	A	—	—

FINISHES

## Patriot Series

DOOR STYLE: INDEPENDENCE WHITE

Specifications for PATRIOT SERIES (pages PS-1-2-3) located after the "SIGNATURE section" behind the DOOR STYLES tab.



# Finishes

FINISHES

STAINED FINISHES	WOOD SPECIES ✓ = FINISH AVAILABLE N/A - NOT AVAILABLE				*Available Glazes
	CHERRY	HICKORY	MAPLE	OAK	+% UPCHARGE
AUTUMN	✓	✓	✓	✓	Ebony, Mocha
BARNWOOD	✓	✓	✓	✓	Ebony, Mocha
CINNAMON	✓	N/A	N/A	N/A	Ebony, Mocha
COCOA	N/A	N/A	✓	N/A	Ebony, Mocha
COTTONWOOD	✓	✓	✓	✓	Ebony, Mocha
DRIFTWOOD	✓	✓	✓	✓	Ebony, Mocha
FENNEL	✓	✓	✓	✓	Ebony, Mocha
HARVEST	N/A	N/A	✓	N/A	Ebony, Mocha
HAZELNUT	✓	✓	✓	✓	Ebony
HONEY	✓	✓	✓	✓	Ebony, Mocha
IRONWOOD	✓	✓	✓	✓	Ebony
MOLASSES	N/A	N/A	✓	N/A	Ebony
NATURAL	✓	✓	✓	✓	Ebony, Mocha
PECAN	✓	✓	✓	✓	Ebony, Mocha
PEPPERCORN	✓	✓	✓	✓	Ebony, Mocha
SABLE	✓	✓	✓	✓	Ebony, Mocha
SPICE	✓	N/A	✓	N/A	Ebony, Mocha
STONE	N/A	N/A	✓	N/A	Ebony
SUEDE	N/A	N/A	✓	N/A	Ebony, Mocha
WHEAT	✓	N/A	✓	N/A	Ebony, Mocha

\*Glaze accents are applied in the hangup areas of doors, drawer fronts, and some trim items. Designer edge may be required for glazed accents on certain door styles.

DISTRESSED STAINS (+% UPCHARGE)	CHERRY	HICKORY	MAPLE	OAK
DISTRESSED BARNWOOD	✓	✓	✓	✓
DISTRESSED COTTONWOOD	✓	✓	✓	✓
DISTRESSED DRIFTWOOD	✓	✓	✓	✓
DISTRESSED IRONWOOD	✓	✓	✓	✓

• Physical distressing, including dents, artificial wood splits, and over sanding of corners and edges is done to doors, drawer fronts, frames, end panels, and some trim items.

# Finishes



When possible, we will use high-density fiberboard to make doors and drawer fronts on painted maple products.

STANDARD PAINTS (+% UPCHARGE)  <i>Available on all woods.</i>	PAINTED FINISH ACCENTS		
	GLAZES (+% UPCHARGE)	HIGHLIGHTS (+% UPCHARGE)	DISTRESSING (% UPCHARGE)
	Painted finish accents upcharge is the single highest percentage, not cumulative.		
ARGOS	<i>Ebony, Mocha</i>	<i>Chocolate, Smoke, Umber</i>	<i>Aged, Rub-thru</i>
BISTRO	<i>Ebony, Mocha</i>	<i>Chocolate, Smoke, Umber</i>	<i>Aged, Rub-thru</i>
BLACK	<i>Not Available</i>	<i>Smoke, Umber</i>	<i>Aged, Rub-thru</i>
CLOUD	<i>Ebony, Mocha</i>	<i>Chocolate, Smoke, Umber</i>	<i>Aged, Rub-thru</i>
CREAMY	<i>Ebony, Mocha</i>	<i>Chocolate, Smoke, Umber</i>	<i>Aged, Rub-thru</i>
DUSK	<i>Ebony</i>	<i>Smoke</i>	<i>Aged, Rub-thru</i>
GALE FORCE	<i>Ebony</i>	<i>Chocolate, Smoke</i>	<i>Aged, Rub-thru</i>
INDUSTRIAL GREY	<i>Ebony</i>	<i>Smoke</i>	<i>Aged, Rub-thru</i>
PERFECT GREY	<i>Not Available</i>	<i>Smoke</i>	<i>Aged, Rub-thru</i>
STORM	<i>Not Available</i>	<i>Smoke</i>	<i>Aged, Rub-thru</i>
URBAN DREAM	<i>Ebony</i>	<i>Smoke</i>	<i>Aged, Rub-thru</i>
WHITE	<i>Ebony, Mocha</i>	<i>Chocolate, Smoke, Umber</i>	<i>Aged, Rub-thru</i>

FINISHES

- **Glazed accent color** consists of thick lines done to hangup areas of doors, drawer fronts, and some trim items. Designer edge may be required for glazed finishes on certain door styles.
- **Highlight accent color** consists of thin opaque lines done to hangup areas of doors, drawer fronts, and some trim items. Designer edge may be required for highlight finishes on certain door styles.
- **Distressed paints** include rub-thru (light sanding of edges and corners to expose raw wood) and aged (heavier sanding of corners and physical denting of painted areas to expose raw wood). Distressed paint process is performed on doors and drawer fronts only. Distressing elements may be combined with glazes or highlights. We recommend a highlight accent color also be applied to distressed paints in order to slightly darken the exposed raw wood.
- **Mist and Glaze Accents.** Haas offers a variety of multi-step finish processes. These processes can create artistic variations from piece to piece inside the same kitchen. This is acceptable as a characteristic of the finishing process and is not to be considered reason for replacement. Additionally, external elements (e.g., cigarette smoke, grease) can cause slight variations and are not to be considered reason for replacement.



# Finishes

Haas Cabinet supplied, use Sherwin-Williams fan deck to choose a special paint color.

COLOR CHOICE PAINTS			
Description	Finish Upcharge	Distressed Feature	Accents: Glazes and Highlights
ANY SELECTED COLOR*	+%	Plain, Rub-thru, or Aged	Ebony, Mocha, Smoke, Umber, Chocolate

## COLOR CHOICE PROGRAM

You will need to order a sample for approval by your customer before an order may be processed.

### How to order sample:

In HOPS use part # CMX to order your sample. This part number will prompt you to list the Sherwin-Williams color and whether you want Accents or Antiquing features on the sample. You may order more than one color sample on an order. List price is \$\$\$ each.

If you have any questions regarding this program, please contact your Customer Service team.

A	B	C	D	E	PRODUCT SAMPLES	F	G	H	I	J
\$\$\$	\$\$\$	\$\$\$	\$\$\$	\$\$\$	<b>DOOR SAMPLE (009)</b> <i>Specify style and finish</i>	\$\$\$	\$\$\$	\$\$\$	\$\$\$	\$\$\$
\$\$\$	\$\$\$	\$\$\$	\$\$\$	\$\$\$	<b>SAMPLE FRONT (097)</b> <b>DOOR &amp; DRAWER FRONT &amp; FRAME</b> <i>Specify style and finish</i>	\$\$\$	\$\$\$	\$\$\$	\$\$\$	\$\$\$
\$\$	\$\$	\$\$	\$\$	\$\$	<b>COLOR CHIP</b> <i>Specify wood and finish</i>	\$\$	\$\$	\$\$	\$\$	\$\$
\$\$\$	\$\$\$	\$\$\$	\$\$\$	\$\$\$	<b>COLOR CHIP DISPLAY BOX</b>	\$\$\$	\$\$\$	\$\$\$	\$\$\$	\$\$\$
\$\$\$	\$\$\$	\$\$\$	\$\$\$	\$\$\$	<b>COLOR CHIP REFILL BOX</b> <i>Specify wood</i> <i>Contains all colors of one wood specie</i>	\$\$\$	\$\$\$	\$\$\$	\$\$\$	\$\$\$

FINISHES



## SIGNATURE SERIES • HAAS DOOR STYLES PRICE CATEGORIES – "A" Available

DOOR STYLE NAME	DOOR STYLE TYPE	DOOR STYLE PAGE NO.	CHERRY	HICKORY	RUSTIC HICKORY	MAPLE	OAK	HDF
Arlington (AR)	<i>Inset</i>	DS-1	—	—	—	A	—	—
Boston (BO)	<i>Full Overlay</i>	DS-1	—	A	A	A	—	—
Brooklyn (BK)	<i>Full Overlay</i>	DS-2	A	—	—	A	—	—
Cambridge (CA)	<i>Full Overlay</i>	DS-2	A	—	—	A	—	—
Concord (CD)	<i>Inset</i>	DS-3	A	A	—	A	—	—
Dover (DV)	<i>Full Overlay</i>	DS-3	A	A	—	A	—	—
Dresden (DR)	<i>Partial Overlay</i>	DS-4	A	A	A	A	—	—
Estate (ET)	<i>Full Overlay</i>	DS-4	A	A	A	A	A	—
Federal (FD)	<i>Partial Overlay</i>	DS-5	A	A	A	A	A	—
Franklin (FR)	<i>Partial Overlay</i>	DS-5	—	—	—	A	—	—
Hampton (HP)	<i>Full Overlay</i>	DS-6	A	—	—	A	—	—
Hermitage (HE)	<i>Full Overlay</i>	DS-6	A	—	—	A	—	—
Jamestown (JA)	<i>Inset</i>	DS-7	A	A	—	A	—	—
Lancaster (LA)	<i>Partial Overlay</i>	DS-7	A	A	A	A	A	—
Lexington (LX)	<i>Full Overlay</i>	DS-8	A	—	—	A	—	—
Madison (MA)	<i>Partial Overlay</i>	DS-8	A	A	—	A	A	—
Manhattan (MH)	<i>Full Overlay</i>	DS-9	—	—	—	—	—	A
Mission (MI)	<i>Full Overlay</i>	DS-9	A	A	A	A	A	—
Monticello (MO)	<i>Full Overlay</i>	DS-10	A	—	—	A	—	—
Pembroke (PMM)	<i>Full Overlay</i>	DS-10	—	—	—	A	—	—
Plantation (PA)	<i>Full Overlay</i>	DS-11	A	—	—	A	A	—
Pleasant Hill (PH)	<i>Partial Overlay</i>	DS-11	A	A	A	A	A	—
Plymouth (PL)	<i>Full Overlay</i>	DS-12	A	A	—	A	—	—
Plymouth-V (PLV)	<i>Full Overlay</i>	DS-12	A	A	—	A	—	—
Prescott (PR)	<i>Full Overlay</i>	DS-13	A	A	—	A	—	—
Richmond (RI)	<i>Inset</i>	DS-13	A	A	—	A	—	—
Shakertown (SH)	<i>Full Overlay</i>	DS-14	A	A	—	A	A	—
Shakertown-V (SHV)	<i>Full Overlay</i>	DS-14	A	A	A	A	A	—
Soho (OO)	<i>Full Overlay</i>	DS-15	A	—	—	A	—	—
Sonoma (SN)	<i>Full Overlay</i>	DS-15	A	—	—	A	—	—
Tudor (TD)	<i>Full Overlay</i>	DS-16	A	A	—	A	—	—
Verona (VN)	<i>Full Overlay</i>	DS-16	A	A	—	A	—	—
Villa (VI)	<i>Full Overlay</i>	DS-17	A	A	A	A	A	—
Winchester (WNM)	<i>Partial Overlay</i>	DS-17	—	—	—	A	—	—

DOOR STYLES  
Signature & Patriot Series

## Patriot Series

DOOR STYLE: INDEPENDENCE WHITE

Specifications for PATRIOT SERIES (pages PS-1-2-3) located after the "SIGNATURE section" behind the DOOR STYLES tab.



# Signature Door Styles

DOOR STYLES  
Signature Series



## ARLINGTON (AR)

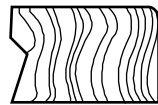
Inset Styling

Wood ABBR  
Species  
Maple .....ARM

Refer to page DS-18 for  
Unique Characteristics on Inset Styled Cabinets

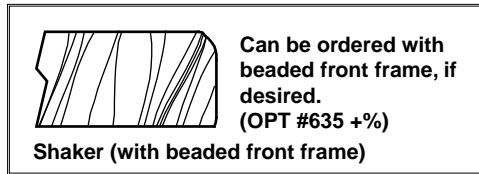
- Full-extension drawer guides must be specified on this door style.

Edge Profile Available

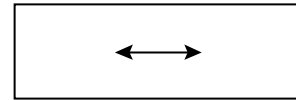


Square (Standard)

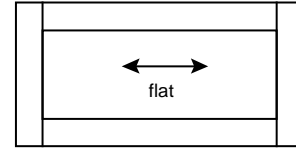
- Inset door styles are standard with square edge and normal front frame.



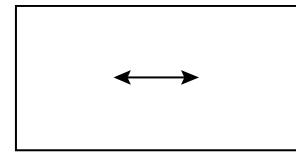
Shaker (with beaded front frame)



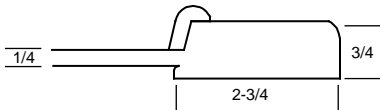
Top Drawer - 1-piece Standard



Lower Drawers - 5-piece Flat Standard (N/A on -4DB)



Lower Drawers - 1-piece (OPT#525, \$)

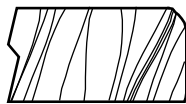


## BOSTON

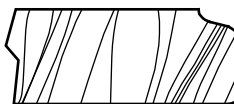
Full Overlay Styling  
Available in Maple (BOM),  
Hickory (BOH), and Rustic Hickory (BORH)

Wood ABBR  
Species  
Maple .....BOH  
Hickory .....BOM  
Rustic Hickory .....BORH

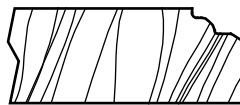
Edge Profiles Available



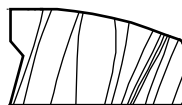
Shaker (Standard)



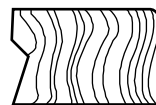
Classic (OPT #642)



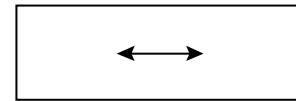
Designer (OPT #640)



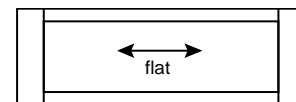
Milan (OPT #643)



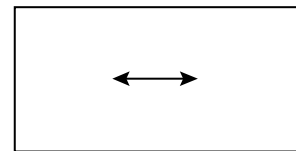
Square (OPT #637)



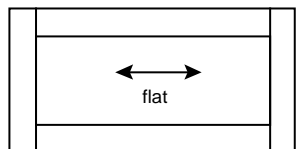
Top Drawer - 1-piece Standard



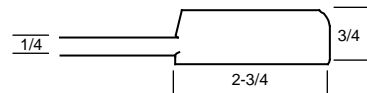
Top Drawer - 5-piece (OPT#520, \$/df)



Lower Drawers - 1-piece (OPT#525, \$)



Lower Drawers - 5-piece Flat Standard



Modification ZA3 may be used on this door style to switch to a 3/8" thick, solid wood, reverse raised panel, if desired. +% premium

This door style matches Revere in Lifestyle Series.

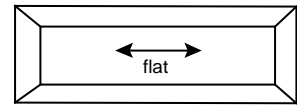
# Signature Door Styles



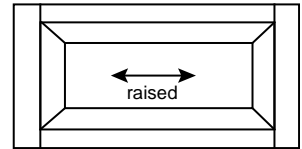
## BROOKLYN (BK)

Full Overlay Styling  
Mitered Door Style

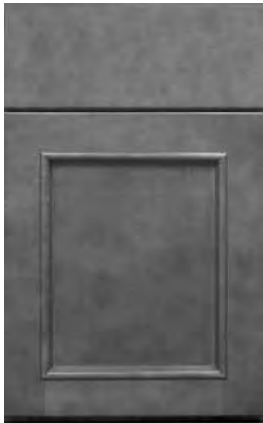
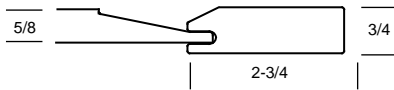
Wood      ABBR  
Species  
Cherry ..... BKC  
Maple ..... BKM



Top Drawer - 5-piece  
Standard



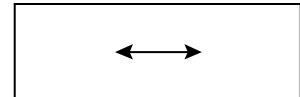
Lower Drawers -  
5-piece Raised  
Standard



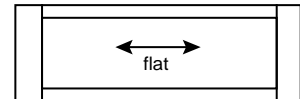
## CAMBRIDGE (CA)

Full Overlay Styling

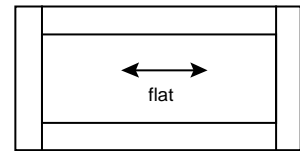
Wood      ABBR  
Species  
Cherry ..... CAC  
Maple ..... CAM



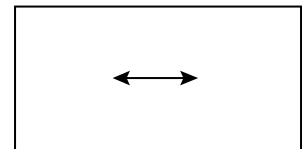
\*Top Drawer - 1-piece  
Standard



Top Drawer - 5-  
piece (OPT#520, \$)



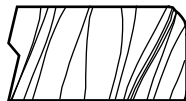
Lower Drawers -  
5-piece Flat  
Standard



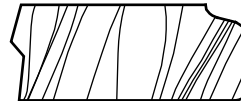
\*Lower Drawers - 1-piece  
(OPT#525, \$)

\*Applied molding is NOT  
on 1-piece drawer fronts.

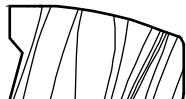
### Edge Profiles Available



Shaker (Standard)



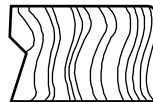
Classic (OPT #642)



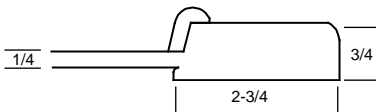
Milan (OPT #643)



Designer (OPT #640)



Square (OPT #637)

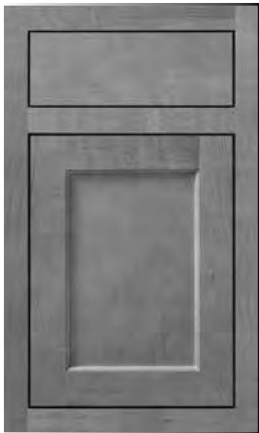


Modification ZA3 may be used on this door style to switch to a 3/8" thick, solid wood, reverse raised panel, if desired. +% premium

This door style matches Haywood in Lifestyle Series.



# Signature Door Styles



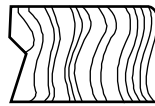
## CONCORD (CD) Inset Styling

Wood ABBR  
Species  
Cherry ..... CDC  
Hickory ..... CDH  
Maple ..... CDM

Refer to page DS-18 for  
Unique Characteristics on Inset Styled Cabinets

- Full-extension drawer guides must be specified on this door style.

### Edge Profile Available



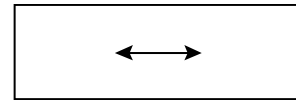
Square (Standard)

- Inset door styles are standard with square edge and normal front frame.

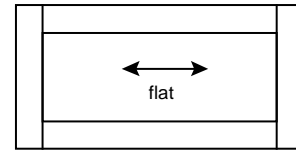


Can be ordered with  
beaded front frame, if  
desired.  
(OPT #635 +%)

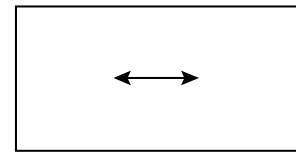
Shaker (with beaded front frame)



Top Drawer - 1-piece  
Standard



Lower Drawers -  
5-piece Flat Standard  
(N/A on -4DB)



Lower Drawers - 1-piece  
(OPT#525, \$)

Modification ZA3 may be used on this door style to switch to a 3/8" thick, solid wood, reverse raised panel, if desired. +% premium

DOOR STYLES  
Signature Series



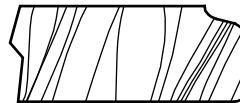
## DOVER (DV) Full Overlay Styling

Wood ABBR  
Species  
Cherry ..... DVC  
Hickory ..... DVG  
Maple ..... DVM

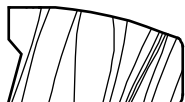
### Edge Profiles Available



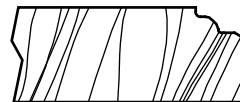
Shaker (Standard)



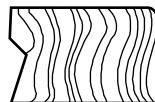
Classic (OPT #642)



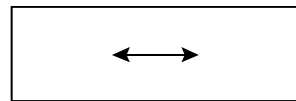
Milan (OPT #643)



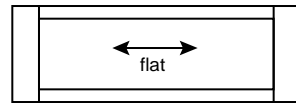
Designer (OPT #640)



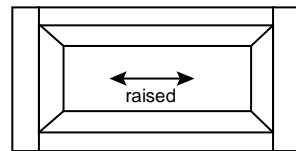
Square (OPT #637)



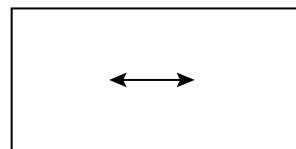
Top Drawer - 1-piece  
Standard



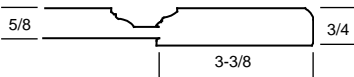
Top Drawer - 5-piece  
(OPT#520, \$)



Lower Drawers -  
5-piece Raised  
Standard



Lower Drawers - 1-piece  
(OPT#525, \$)

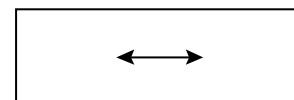


# Signature Door Styles

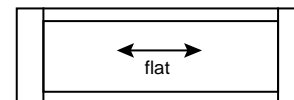


## DRESDEN (DR) Partial Overlay Styling

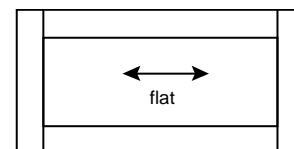
Wood Species ABBR  
 Cherry .....DRC  
 Hickory .....DRH  
 Rustic Hickory .... DRRH  
 Maple ..... DRM



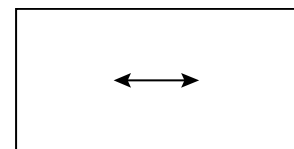
Top Drawer - 1-piece Standard



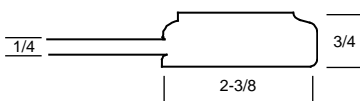
Top Drawer - 5-piece (OPT#520, \$)



Lower Drawers - 5-piece Flat Standard



Lower Drawers - 1-piece (OPT#525, \$)

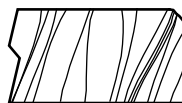


(Hickory inner edge profile is different than shown. See samples.)

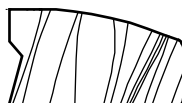
### Edge Profiles Available



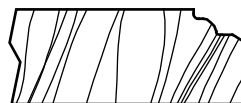
Classic (Standard)



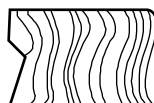
Shaker (OPT #641)  
(Standard on Maple)



Milan (OPT #643)



Designer (OPT #640)

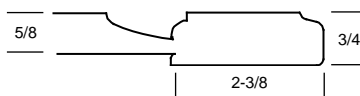


Square (OPT #637)



Arch Wall Door

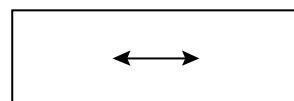
(Arch wall door available in cherry, maple, and oak woods.)



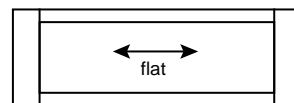
(Hickory inner edge profile is different than shown. See samples.)

## ESTATE (ET) Full Overlay Styling

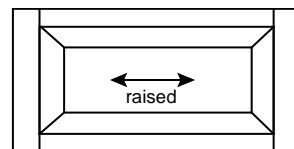
Wood Species ABBR  
 Cherry .....ETC  
 Hickory .....ETHS  
 Rustic Hickory ....ETRH  
 Maple .....ETM  
 Oak..... ETO



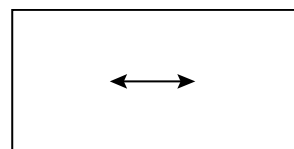
Top Drawer - 1-piece Standard



Top Drawer - 5-piece (OPT#520, \$)

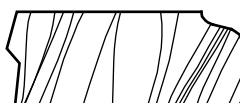


Lower Drawers - 5-piece Raised Standard



Lower Drawers - 1-piece (OPT#525, \$)

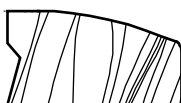
### Edge Profiles Available



Classic (Standard)



Shaker (OPT #641)



Milan (OPT #643)



Designer (OPT #640)

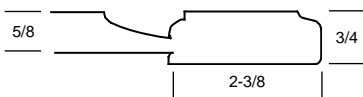


# Signature Door Styles



Arch Wall Door

(Arch wall door available in cherry, hickory, maple, and oak woods.)

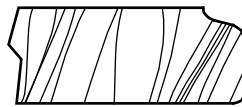


(Hickory inner edge profile is different than shown. See samples.)

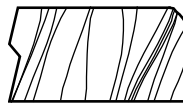
## FEDERAL (FD) Partial Overlay Styling

Wood Species	ABBR
Cherry .....	FDC
Hickory .....	FDH
Rustic Hickory .....	FDRH
Maple .....	FDM
Oak .....	FDO

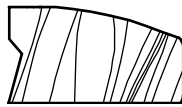
### Edge Profiles Available



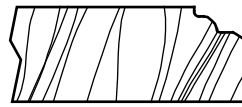
Classic (Standard)



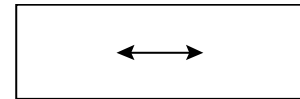
Shaker (OPT #641)



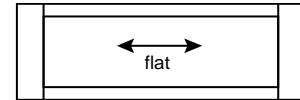
Milan (OPT #643)



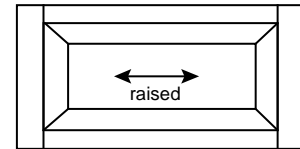
Designer (OPT #640)



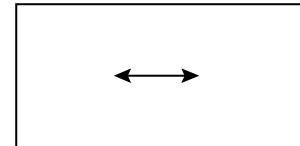
Top Drawer - 1-piece Standard



Top Drawer - 5-piece (OPT#520, \$)



Lower Drawers - 5-piece Raised Standard



Lower Drawers - 1-piece (OPT#525, \$)

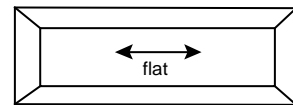
DOOR STYLES  
Signature Series

This door style matches Capital in Lifestyle Series. (Capital available in square door style only.)

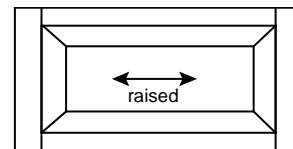


## FRANKLIN (FR) Partial Overlay Styling Mitered Door Style

Wood Species	ABBR
Maple .....	FRM



Top Drawer - 5-piece (OPT#520, \$)



Lower Drawers - 5-piece Raised Standard

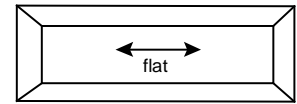
# Signature Door Styles



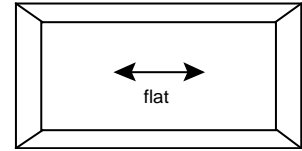
## HAMPTON (HP)

Full Overlay Styling  
Mitered Door Style

Wood      ABBR  
Species  
Cherry .....HPC  
Maple .....HPM



Top Drawer - 5-piece  
Standard



Lower Drawers -  
5-piece Flat  
Standard



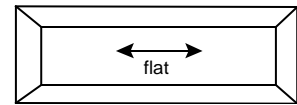
Modification ZA3 may be used on this door style to switch to a 3/8" thick, solid wood, reverse raised panel, if desired.  
+% premium



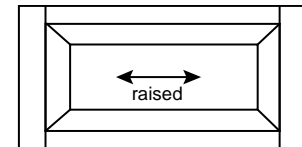
## HERMITAGE (HE)

Full Overlay Styling  
Mitered Door Style

Wood      ABBR  
Species  
Cherry .....HEC  
Maple .....HEM



Top Drawer - 5-piece  
Standard



Lower Drawers -  
5-piece Raised  
Standard





# Signature Door Styles



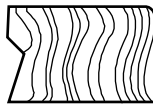
## JAMESTOWN (JA) Inset Styling

Wood Species ABBR  
 Cherry ..... JAC  
 Hickory ..... JAH  
 Maple ..... JAM

Refer to page DS-18 for  
 Unique Characteristics on Inset Styled Cabinets

- Full-extension drawer guides must be specified on this door style.

### Edge Profile Available

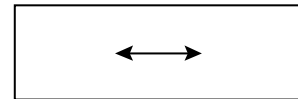


Square

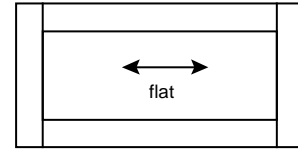


Shaker (with beaded front frame)

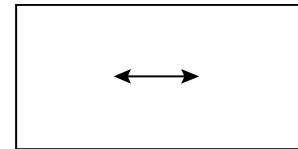
Can be ordered with  
 beaded front frame, if  
 desired.  
 (OPT #635 +%)



Top Drawer - 1-piece  
Standard



Lower Drawers -  
5-piece Flat Standard  
(N/A on -4DB)



Lower Drawers - 1-  
piece (OPT#525, \$)

- Inset door styles are standard with square edge and normal front frame.

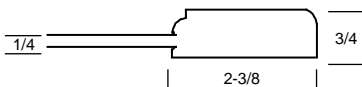
Modification ZA3 may be used on this door style to switch to a 3/8" thick, solid wood, reverse raised panel, if desired. +% premium

DOOR STYLES  
Signature Series



Wall Door Arch

(Arch wall door available in  
 cherry, hickory, maple, and oak woods.)

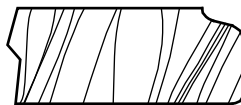


(Hickory inner edge profile is  
 different than shown. See samples.)

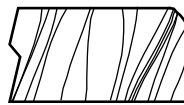
## LANCASTER (LA) Partial Overlay Styling

Wood Species ABBR  
 Cherry ..... LAC  
 Hickory ..... LAH  
 Rustic Hickory .....LARH  
 Maple .....LAM  
 Oak.....LAO

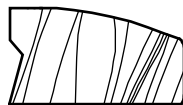
### Edge Profiles Available



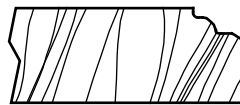
Classic (Standard)



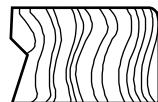
Shaker  
(OPT #641)  
(Standard on Maple)



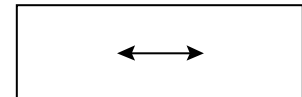
Milan (OPT #643)



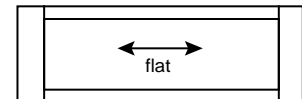
Designer (OPT #640)



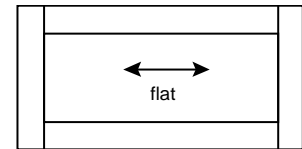
Square (OPT #637)



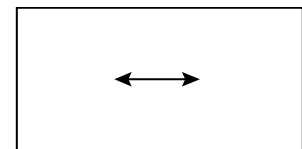
Top Drawer - 1-piece  
Standard



Top Drawer - 5-piece  
(OPT#520, \$)



Lower Drawers -  
5-piece Flat  
Standard



Lower Drawers - 1-piece  
(OPT#525, \$)

Modification ZA3 may be used on this door style to switch to a 3/8" thick, solid wood, reverse raised panel, if desired. +% premium

This door style matches Brooks in Lifestyle Series.



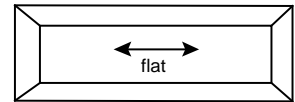
# Signature Door Styles



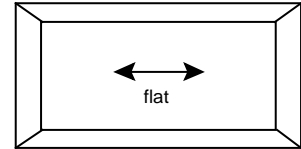
## LEXINGTON (LX) Full Overlay Styling Mitered Door Style

Wood      ABBR  
Species  
Cherry ..... LXC  
Maple ..... LXM

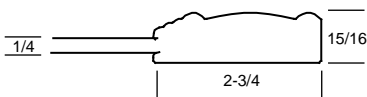
Modification ZA3 may be used on this door style to switch to a 3/8" thick, solid wood, reverse raised panel, if desired.  
+% premium



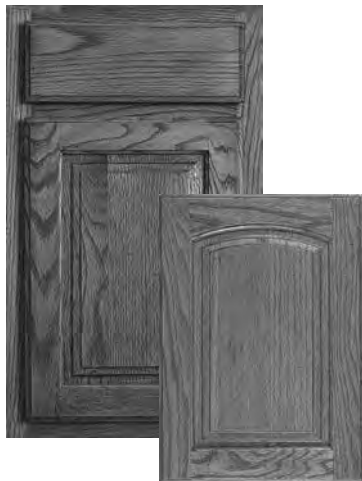
Top Drawer - 5-piece Standard



Lower Drawers - 5-piece Flat Standard



This door style matches Kennedy in Lifestyle Series.



Arch Wall Door

(Arch wall door available in oak wood.)

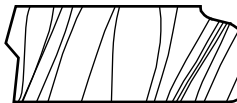


(Hickory inner edge profile is different than shown. See samples.)

## MADISON (MA) Partial Overlay Styling

Wood      ABBR  
Species  
Cherry ..... MAC  
Hickory ..... MAH  
Maple ..... MAM  
Oak ..... MAO

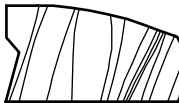
### Edge Profiles Available



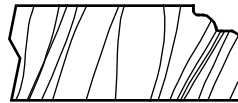
Classic (Standard)



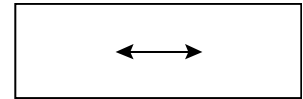
Shaker (OPT #641)



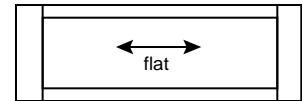
Milan (OPT #643)



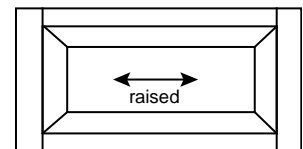
Designer (OPT #640)



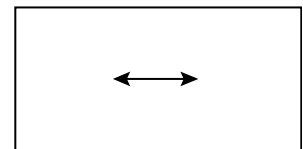
Top Drawer - 1-piece Standard



Top Drawer - 5-piece (OPT#520, \$)



Lower Drawers - 5-piece Raised Standard



Lower Drawers - 1-piece (OPT#525, \$)



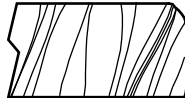
# Signature Door Styles



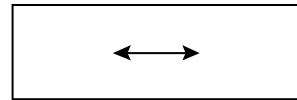
## MANHATTAN (MH) Full Overlay Styling High Density Fiberboard/Maple Components

Wood Species  
ABBR  
HDF/Maple..... MH

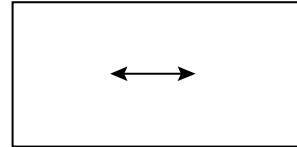
### Edge Profile Available



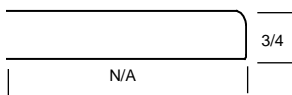
Shaker (Standard)



Top Drawer - 1-piece  
Standard



Lower Drawers - 1-  
piece (OPT#525, \$)



AVAILABLE IN PAINTED FINISHES ONLY.

This door style matches Metro in Lifestyle Series.

DOOR STYLES  
Signature Series



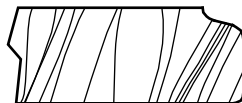
## MISSION (MI) Full Overlay Styling

Wood Species  
ABBR  
Cherry..... MIC  
Hickory..... MIH  
Rustic Hickory .... MIRH  
Maple ..... MIM  
Oak..... MIO

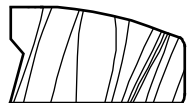
### Edge Profiles Available



Shaker (Standard)



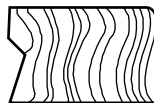
Classic (OPT #642)



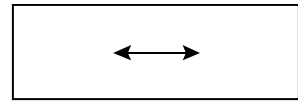
Milan (OPT #643)



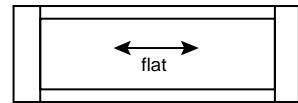
Designer (OPT #640)



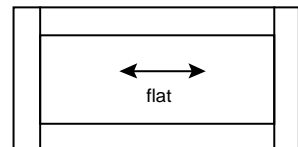
Square (OPT #637)



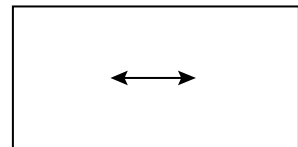
Top Drawer - 1-piece  
Standard



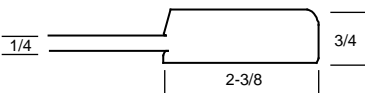
Top Drawer - 5-piece  
(OPT#520, \$)



Lower Drawers -  
5-piece Flat  
Standard



Lower Drawers - 1-piece  
(OPT#525, \$)



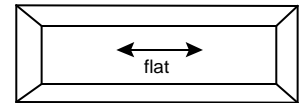
# Signature Door Styles



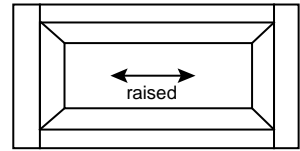
## MONTICELLO (MO)

Full Overlay Styling  
Mitered Door Style

Wood            ABBR  
Species  
Cherry ..... MOC  
Maple ..... MOM



Top Drawer - 5-piece Standard



Lower Drawers - 5-piece Raised Standard



This door style matches Jefferson in Lifestyle Series.

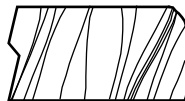


## PEMBROKE (PMM)

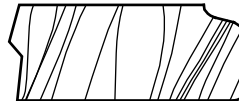
Full Overlay Styling

Wood            ABBR  
Species  
Maple ..... PMM

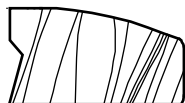
### Edge Profiles Available



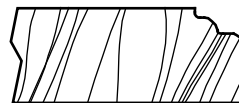
Shaker (Standard)



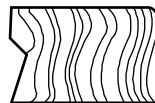
Classic (OPT #642)



Milan (OPT #643)



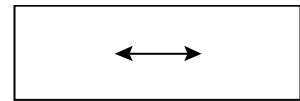
Designer (OPT #640)



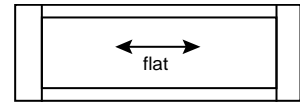
Square (OPT #637)



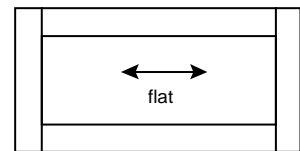
Modification ZA3 may be used on this door style to switch to a 3/8" thick, solid wood, reverse raised panel, if desired. +% premium



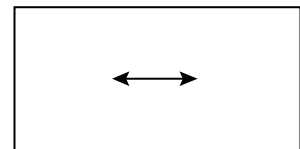
Top Drawer - 1-piece Standard



Top Drawer - 5-piece (OPT#520, \$)



Lower Drawers - 5-piece Flat Standard



Lower Drawers - 1-piece (OPT#525, \$)

This door style matches Ashbury in Lifestyle Series.

DOOR STYLES  
Signature Series



# Signature Door Styles

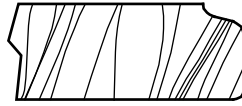


## PLANTATION (PA)

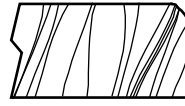
Full Overlay Styling

Wood            ABBR  
 Species  
 Cherry ..... PAC  
 Maple ..... PAM  
 Oak ..... PAO

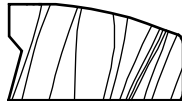
Edge Profiles Available



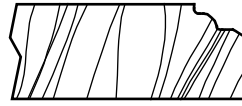
Classic (Standard)



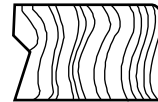
Shaker (OPT #641)



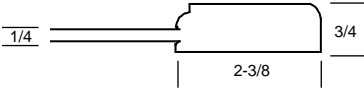
Milan (OPT #643)



Designer (OPT #640)

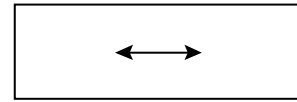


Square (OPT #637)

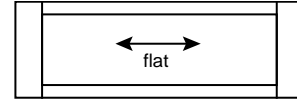


Modification ZA3 may be used on this door style to switch to a 3/8" thick, solid wood, reverse raised panel, if desired. +% premium

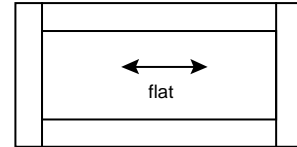
This door style matches Morgan in Lifestyle Series.



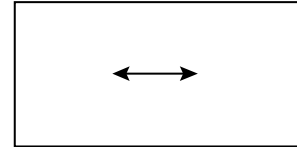
Top Drawer - 1-piece Standard



Top Drawer - 5-piece (OPT#520, \$)



Lower Drawers - 5-piece Flat Standard



Lower Drawers - 1-piece (OPT#525, \$)

DOOR STYLES  
Signature Series



## PLEASANT HILL

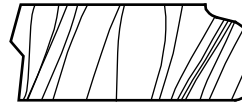
Partial Overlay Styling

Wood            ABBR  
 Species  
 Cherry ..... PHC  
 Hickory ..... PHH  
 Rustic Hickory .... PHRH  
 Maple ..... PHM  
 Oak ..... PHO

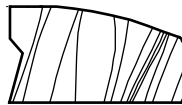
Edge Profiles Available



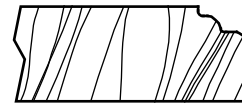
Shaker (Standard)



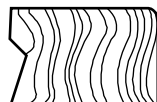
Classic (OPT #642)



Milan (OPT #643)



Designer (OPT #640)

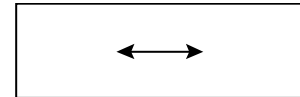


Square (OPT #637)

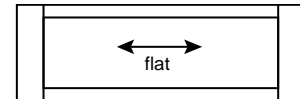


Modification ZA3 may be used on this door style to switch to a 3/8" thick, solid wood, reverse raised panel, if desired. +% premium

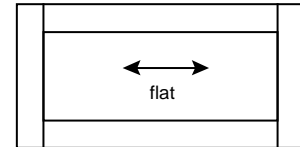
This door style matches Hoffman in Lifestyle Series.



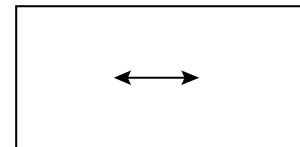
Top Drawer - 1-piece Standard



Top Drawer - 5-piece (OPT#520, \$)



Lower Drawers - 5-piece Flat Standard



Lower Drawers - 1-piece (OPT#525, \$)

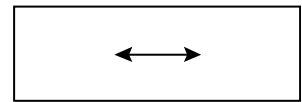
# Signature Door Styles



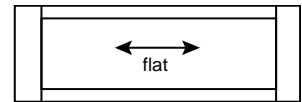
## PLYMOUTH (PL)

Full Overlay Styling

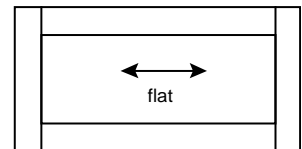
Wood            ABBR  
 Species  
 Cherry ..... PLC  
 Hickory ..... PLH  
 Maple ..... PLM



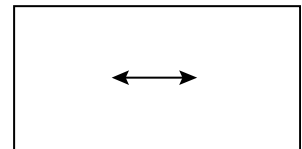
Top Drawer - 1-piece Standard



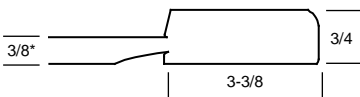
Top Drawer - 5-piece (OPT#520, \$)



Lower Drawers - 5-piece Flat Standard

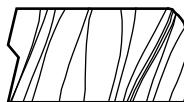


Lower Drawers - 1-piece (OPT#525, \$)

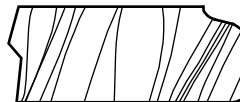


\*reverse raised, solid center panel on doors

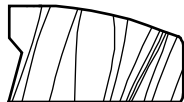
### Edge Profiles Available



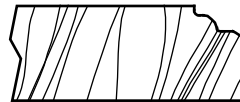
Shaker (Standard)



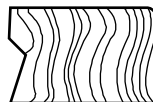
Classic (OPT #642)



Milan (OPT #643)



Designer (OPT #640)



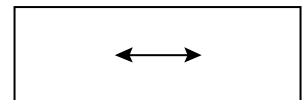
Square (OPT #637)



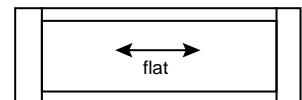
## PLYMOUTH-V (PLV)

Full Overlay Styling

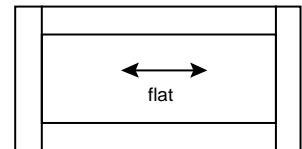
Wood            ABBR  
 Species  
 Cherry ..... PLVC  
 Hickory ..... PLVH  
 Maple ..... PLVM



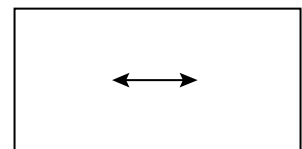
Top Drawer - 1-piece Standard



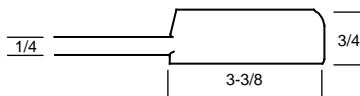
Top Drawer - 5-piece (OPT#520, \$)



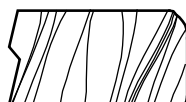
Lower Drawers - 5-piece Flat Standard



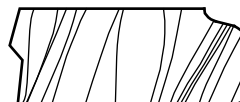
Lower Drawers - 1-piece (OPT#525, \$)



### Edge Profiles Available



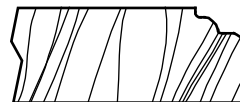
Shaker (Standard)



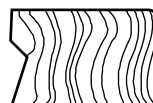
Classic (OPT #642)



Milan (OPT #643)



Designer (OPT #640)



Square (OPT #637)

DOOR STYLES  
 Signature Series



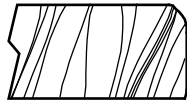
# Signature Door Styles



## PRESCOTT (PR) Full Overlay Styling

Wood Species ABBR  
 Cherry ..... PRC  
 Hickory ..... PRH  
 Maple ..... PRM

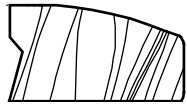
### Edge Profiles Available



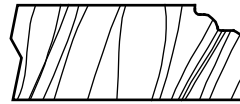
Shaker (Standard)



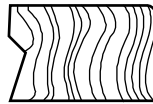
Classic (OPT #642)



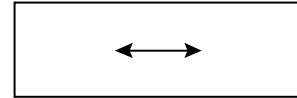
Milan (OPT #643)



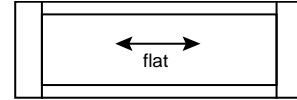
Designer (OPT #640)



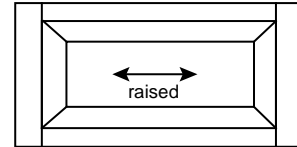
Square (OPT #637)



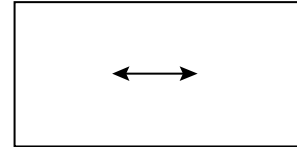
Top Drawer - 1-piece Standard



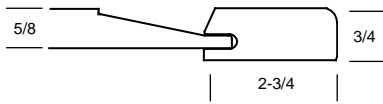
Top Drawer - 5-piece (OPT#520, \$)



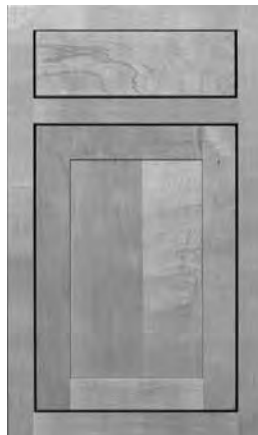
Lower Drawers - 5-piece Raised Standard



Lower Drawers - 1-piece (OPT#525, \$)



DOOR STYLES  
Signature Series



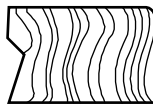
## RICHMOND (RI) Inset Styling

Wood Species ABBR  
 Cherry ..... RIC  
 Hickory ..... RIH  
 Maple ..... RIM

Refer to page DS-18 for Unique Characteristics on Inset Styled Cabinets

- Full-extension drawer guides must be specified on this door style.

### Edge Profile Available



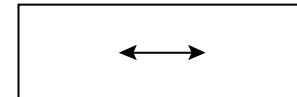
Square

- Inset door styles are standard with square edge and normal front frame.

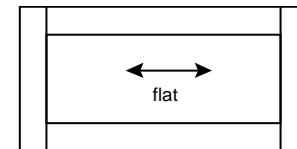


Shaker (with beaded front frame)

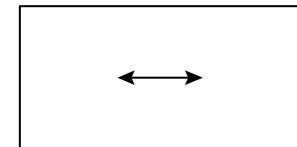
Can be ordered with beaded front frame, if desired. (OPT #635 +%)



Top Drawer - 1-piece Standard



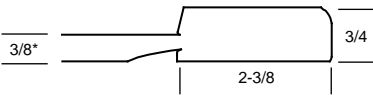
Lower Drawers - 5-piece Flat Standard (N/A on -4DB)



Lower Drawers - 1-piece (OPT#525, \$)

Modification ZA3 may be used on this door style to switch to a 3/8" thick, solid wood, reverse raised panel, if desired. +% premium

# Signature Door Styles



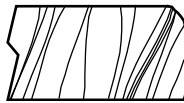
\*reverse raised, solid center panel on doors

## SHAKERTOWN (SH)

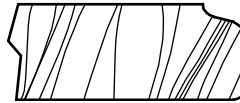
Full Overlay Styling

Wood Species	ABBR
Cherry .....	SHC
Hickory .....	SHH
Maple .....	SHM
Oak.....	SHO

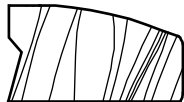
### Edge Profiles Available



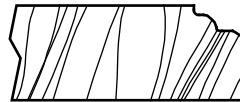
Shaker (Standard)



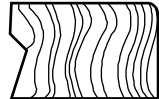
Classic (OPT #642)



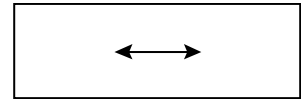
Milan (OPT #643)



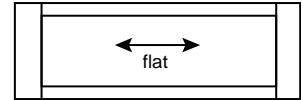
Designer (OPT #640)



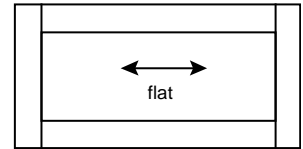
Square (OPT #637)



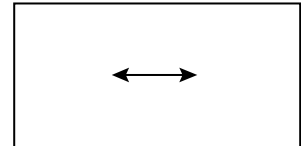
Top Drawer - 1-piece Standard



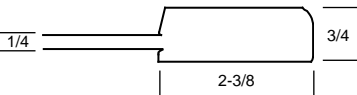
Top Drawer - 5-piece (OPT#520, \$)



Lower Drawers - 5-piece Flat Standard



Lower Drawers - 1-piece (OPT#525, \$)



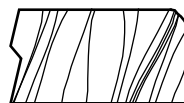
This door style matches Harbor in Lifestyle Series.

## SHAKERTOWN-V (SHV)

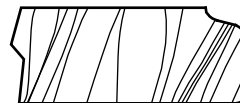
Full Overlay Styling

Wood Species	ABBR
Cherry .....	SHVC
Hickory .....	SHVH
Rustic Hickory .....	SHHR
Maple .....	SHVM
Oak.....	SHVO

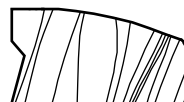
### Edge Profiles Available



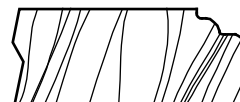
Shaker (Standard)



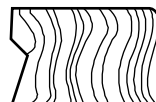
Classic (OPT #642)



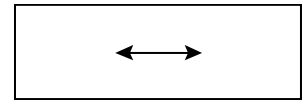
Milan (OPT #643)



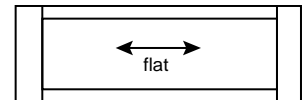
Designer (OPT #640)



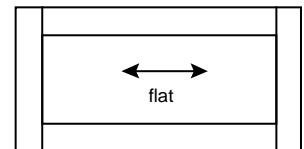
Square (OPT #637)



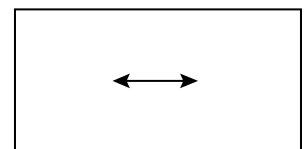
Top Drawer - 1-piece Standard



Top Drawer - 5-piece (OPT#520, \$)



Lower Drawers - 5-piece Flat Standard



Lower Drawers - 1-piece (OPT#525, \$)

DOOR STYLES  
Signature Series



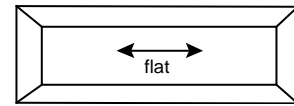
# Signature Door Styles



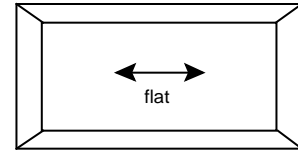
## SOHO (OO) Full Overlay Styling Mitered Door Style

Wood      ABBR  
Species  
Cherry.....SOC  
Maple .....SOM

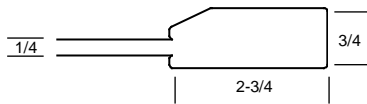
Modification ZA3 may be used on this door style to switch to a 3/8" thick, solid wood, reverse raised panel, if desired.  
+% premium



Top Drawer - 5-piece Standard



Lower Drawers - 5-piece Flat Standard



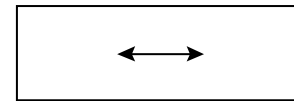
This door style matches Fifth Avenue in Lifestyle Series.

DOOR STYLES  
Signature Series

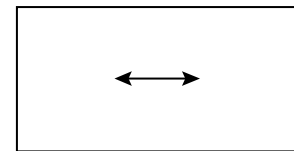


## SONOMA (SN) Full Overlay Styling

Wood      ABBR  
Species  
Cherry.....SNC  
Maple .....SNM



Top Drawer - 1-piece Standard



Lower Drawers - 1-piece Standard

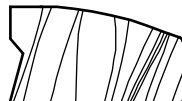
### Edge Profiles Available



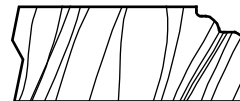
Shaker (Standard)



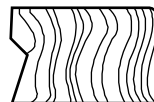
Classic (OPT #642)



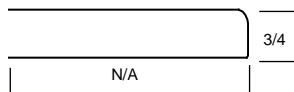
Milan (OPT #643)



Designer (OPT #640)



Square (OPT #637)





# Signature Door Styles



## TUDOR (TD) Full Overlay Styling

Wood      ABBR  
Species  
Cherry ..... TDC  
Hickory ..... TDH  
Maple ..... TDM

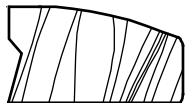
### Edge Profiles Available



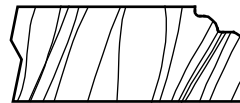
Shaker (Standard)



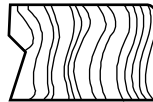
Classic (OPT #642)



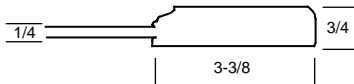
Milan (OPT #643)



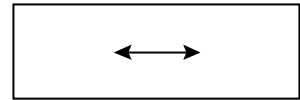
Designer (OPT #640)



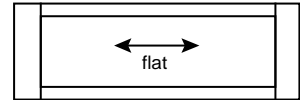
Square (OPT #637)



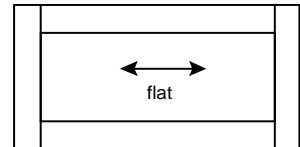
Modification ZA3 may be used on this door style to switch to a 3/8" thick, solid wood, reverse raised panel, if desired. +% premium



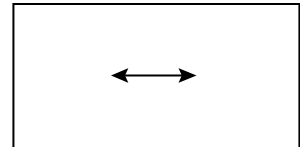
Top Drawer - 1-piece  
Standard



Top Drawer - 5-piece  
(OPT#520, \$)



Lower Drawers -  
5-piece Flat  
Standard



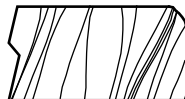
Lower Drawers - 1-piece  
(OPT#525, \$)



## VERONA (VN) Full Overlay Styling

Wood      ABBR  
Species  
Cherry ..... VNC  
Hickory ..... VNH  
Maple ..... VNM

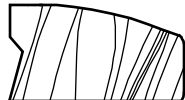
### Edge Profiles Available



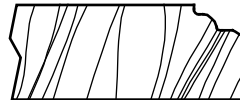
Shaker (Standard)



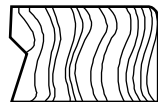
Classic (OPT #642)



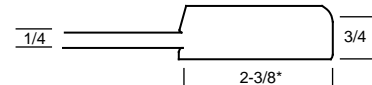
Milan (OPT #643)



Designer (OPT #640)

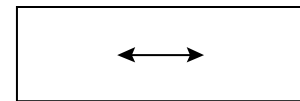


Square (OPT #637)

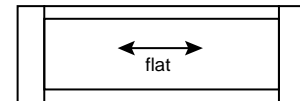


\*Rails are 3-3/8" with detailed inside edge profile (see Dover).

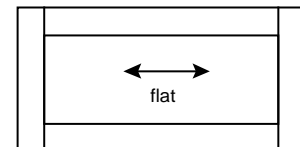
Modification ZA3 may be used on this door style to switch to a 3/8" thick, solid wood, reverse raised panel, if desired. +% premium



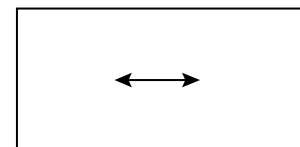
Top Drawer - 1-piece  
Standard



Top Drawer - 5-piece  
(OPT#520, \$)



Lower Drawers -  
5-piece Flat  
Standard



Lower Drawers - 1-  
piece (OPT#525, \$)

DOOR STYLES  
Signature Series



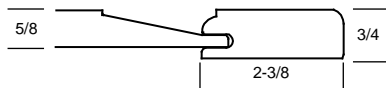
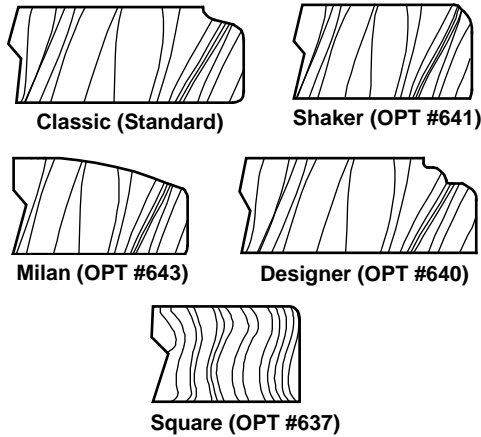
# Signature Door Styles



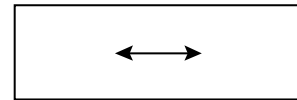
## VILLA (VI) Full Overlay Styling

Wood                    ABBR  
Species  
Cherry .....VIC  
Hickory .....VIH  
Rustic Hickory ..... VIRH  
Maple ..... VIM  
Oak..... VIO

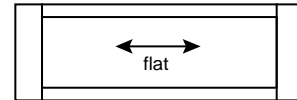
### Edge Profiles Available



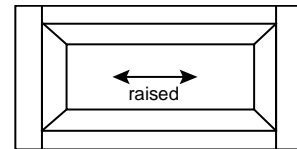
(Hickory inner edge profile is different than shown. See samples.)



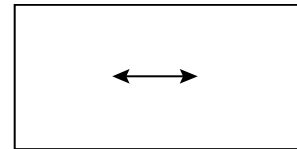
Top Drawer - 1-piece Standard



Top Drawer - 5-piece (OPT#520, \$)



Lower Drawers - 5-piece Raised Standard



Lower Drawers - 1-piece (OPT#525, \$)

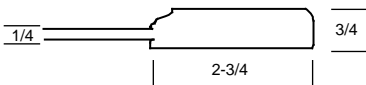
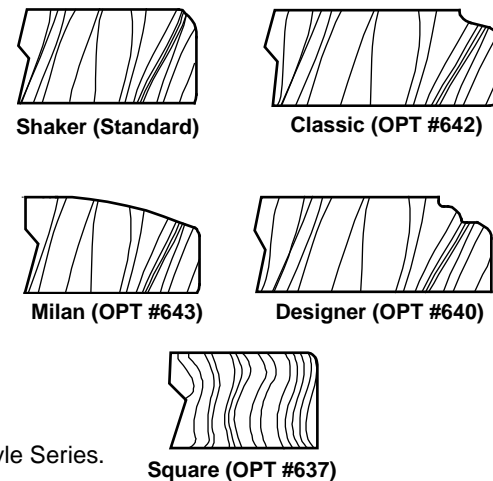
DOOR STYLES  
Signature Series



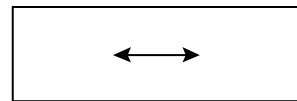
## WINCHESTER (WNM) Partial Overlay Styling

Wood                    ABBR  
Species  
Maple ..... WNM

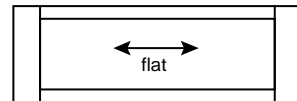
### Edge Profiles Available



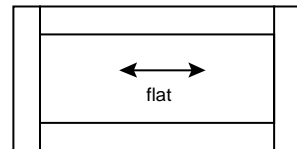
Modification ZA3 may be used on this door style to switch to a 3/8" thick, solid wood, reverse raised panel, if desired. +% premium



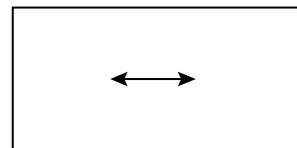
Top Drawer - 1-piece Standard



Top Drawer - 5-piece (OPT#520, \$)



Lower Drawers - 5-piece Flat Standard



Lower Drawers - 1-piece (OPT#525, \$)

This door style matches Wabash in Lifestyle Series.



## UNIQUE CHARACTERISTICS ON INSET STYLED CABINETS

- Unless specified otherwise, 12" deep standard wall cabinets will be 13" overall depth in inset door styles. 12" deep base cabinets may be modified to 13" deep at no charge (D12).
- 5-piece drawer fronts are **not** available on the top drawer or on -4 drawer base cabinets.
- Inset door hinges, viewed from the cabinet front, are 1/2" wide and extend approximately 2-1/2" into the interior of the cabinet.
- Sliding shelf systems (SS) will **NOT** work on inset door styles. Full-access rollout sets (FAR) will work.
- Limited availability on most Rev-A-Shelf inserts for inset door styles. See the specific insert in the MODIFICATIONS/OPTIONS section to see if this insert is available.
- Full-extension guides (Blum Tandem Plus) **must** be ordered on inset cabinets. This is due to the overall length of standard Hettich guides being too long to fit recessed inside an inset styled product.
- Inset styles are standard with nonbeaded front frame and square edge on doors. A beaded front frame and Shaker door edges may be specified using Option #635, +%.
- We suggest integrated replica style ends (MOD E52) to get a door look on exposed ends.
- Inset doors will have 1/8" gap between door and frame edges.



# Patriot Series

## INDEPENDENCE WHITE WHITE PAINT ONLY

Independence White is a full overlay, flat panel, Shaker door style with some noticeable differences from the other door styles Haas offers.

- An all MDF core door. The door framing, center panel, and drawer front are made of a new MDF material called a Platinum board. The cabinet front frame and trim items remain maple.
- Available in **white paint only**. No other stains or paints are available on this door style.

### INDEPENDENCE WHITE SPECIFICATIONS

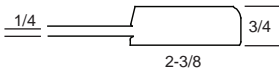
- Shaker outer edge only.
- Slab (single piece) drawer front only. Upgrades to 5-piece drawer fronts are not available.
- The drawer is the Haas standard Signature Series drawer: solid wood drawer box, dovetailed, with Blum Edge undermount drawer guides, 7/8 extension, with soft-close features. There are no other drawer upgrades available.
- Matching white melamine end panels on all ends. No need to order matching ends on this door style. Finished ends are not available on this series.
- Six-way adjustable hinges. The hinges are NOT soft-close, but a soft-close plunger is available and may be field installed, very simply, if this feature is desired.
- There are no modifications or options available.

There is NO finish upcharge for the white paint that needs to be added to this pricing.



### INDEPENDENCE WHITE WHITE PAINT ONLY

Independence White door style matches Harbor Maple door in Lifestyle and Shakertown-V in Signature.



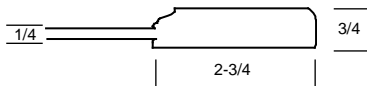
PATRIOT SERIES

**LIFESTYLE SERIES**  
**HAAS DOOR STYLES PRICE CATEGORIES – "A" Available**

DOOR STYLE NAME	DOOR OVERLAY	PAGE NO.	CHERRY	HICKORY	RUSTIC HICKORY	MAPLE	OAK	HDF	SIGNATURE MATCH
Ashbury (ASM)	Full Overlay	LI-1	–	–	–	A	–	–	Pembroke
Bayside (BYM)	Partial Overlay	LI-1	–	–	–	A	–	–	Use Flex Program
Brooks (BR)	Partial Overlay	LI-2	–	A	A	A	A	–	Lancaster
Canton (CNM)	Partial Overlay	LI-2	–	–	–	A	–	–	Use Flex Program
Capital (CP)	Partial Overlay	LI-3	A	–	–	A	A	–	Federal (Square only)
Fifth Avenue (5A)	Full Overlay	LI-4	–	–	–	A	–	–	Soho
Harbor (HB)	Full Overlay	LI-4	A	A	A	A	–	–	Shakertown-V
Haywood (HYM)	Full Overlay	LI-5	–	–	–	A	–	–	Cambridge
Hoffman (HF)	Partial Overlay	LI-5	–	A	A	A	–	–	Pleasant Hill
Kennedy (KE)	Full Overlay	LI-6	–	–	–	A	–	–	Lexington
Metro (MT)	Full Overlay	LI-7	–	–	–	–	–	A	Manhattan
Morgan (MG)	Full Overlay	LI-7	A	–	–	A	A	–	Plantation
Revere (RRH/RRM/RRRH)	Full Overlay	LI-8	–	A	A	A	–	–	Boston
Wabash (WAM)	Partial Overlay	LI-8	–	–	–	A	–	–	Winchester



# Lifestyle Door Styles



Modification ZA3 may be used on this door style to switch to a 3/8" thick, solid wood, reverse raised panel, if desired. +% premium

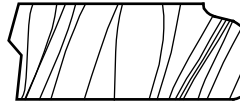
## ASHBURY (ASM) Full Overlay Styling

Wood Species      ABBR  
Maple .....ASM

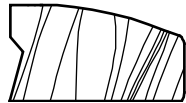
### Edge Profiles Available



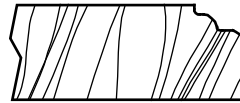
Shaker (Standard)



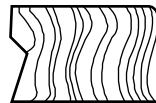
Classic (OPT #642)



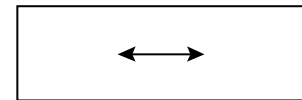
Milan (OPT #643)



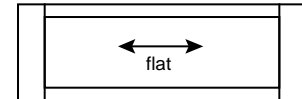
Designer (OPT #640)



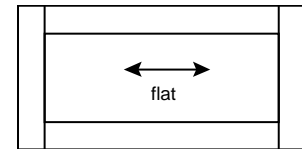
Square (OPT #637)



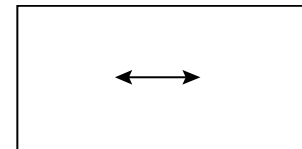
Top Drawer - 1-piece Standard



Top Drawer - 5-piece (OPT#520, \$\$/df)

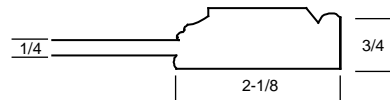


Lower Drawers - 5-piece Flat (Option #520, \$\$/df)



Lower Drawers - 1-piece Standard

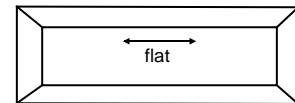
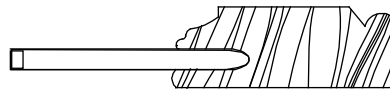
This door style matches Pembroke door style in Signature.



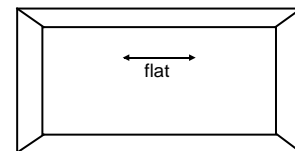
## BAYSIDE MAPLE (BYM) Partial Overlay Styling

Wood Species      ABBR  
Maple .....BYM

### Edge Profile Available



Top Drawer - 5-piece Standard

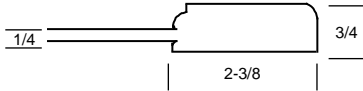


Lower Drawers - 5-piece Flat Standard

Use Lifestyle Flex program to order matching door style in Signature.

LIFESTYLE

# Lifestyle Door Styles



Modification ZA3 may be used on this door style to switch to a 3/8" thick, solid wood, reverse raised panel, if desired. +% premium

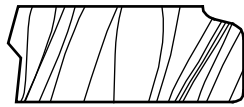
This door style matches Lancaster door style in Signature.

## BROOKS (BR) Partial Overlay Styling

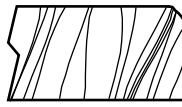
Available in Maple (BRM), Hickory (BRH),  
Rustic Hickory (BRRH), Oak (BRO)

Wood Species  
Maple ..... BRM  
Hickory ..... BRH  
Rustic Hickory .. BRRH  
Oak..... BRO

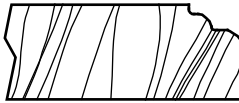
### Edge Profiles Available



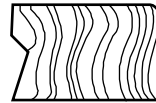
Classic (Standard)



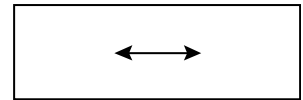
Shaker  
(OPT #641)  
(Standard on Maple)



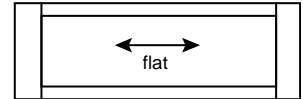
Designer (OPT #640)



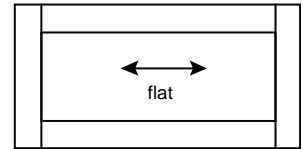
Square (OPT #637)



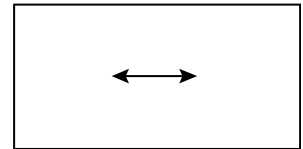
Top Drawer - 1-piece  
Standard



Top Drawer - 5-piece  
(OPT#520, \$\$/df)



Lower Drawers -  
5-piece Flat  
(Option #520, \$\$/df)

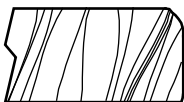


Lower Drawers - 1-piece  
Standard

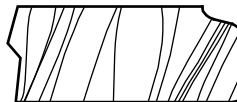
## CANTON MAPLE (CNM) Partial Overlay Styling

Wood Species  
Maple ..... CNM

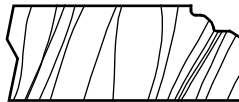
### Edge Profiles Available



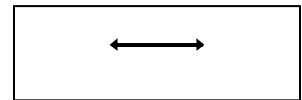
Shaker (Standard)



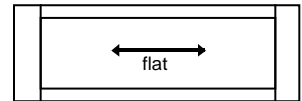
Classic (OPT #642)



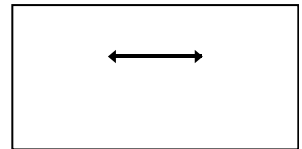
Designer (OPT #640)



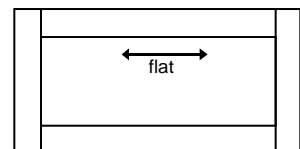
Top Drawer - 1-piece  
Standard



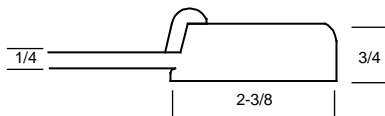
Top Drawer - 5-piece  
(OPT#520, \$\$/df)



Lower Drawers - 1-piece  
Standard



Lower Drawers - 5-piece  
Flat  
(OPT#520, \$\$/df)



Modification ZA3 may be used on this door style to switch to a 3/8" thick, solid wood, reverse raised panel, if desired. +% premium

Use Lifestyle Flex program to order matching door style in Signature.



# Lifestyle Door Styles

## CAPITAL

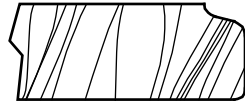
Partial Overlay Styling

Available in Cherry (CPC), Maple (CPMS), Oak (CPOS)



Wood      ABBR  
 Species  
 Cherry .....CPC  
 Maple .....CPMS  
 Oak.....CPOS

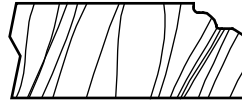
### Edge Profiles Available



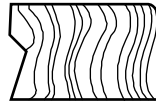
Classic (Standard)



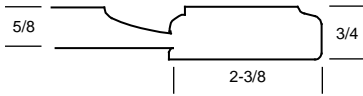
Shaker (OPT #641)



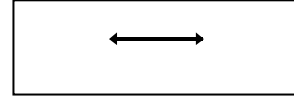
Designer (OPT #640)



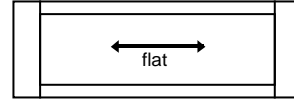
Square (OPT #637)



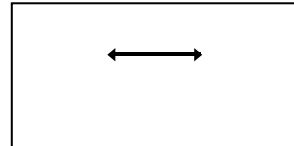
This door style matches Federal door style in Signature. Available in square door style only.



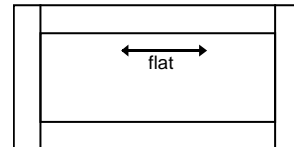
Top Drawer - 1-piece Standard



Top Drawer - 5-piece (OPT#520, \$\$/df)



Lower Drawers - 1-piece Standard



Lower Drawers - 5-piece Flat (OPT#520, \$\$/df)



# Lifestyle Door Styles

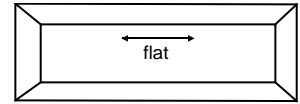


## FIFTH AVENUE MAPLE (5A)

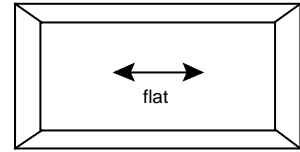
Full Overlay Styling  
Mitered Door Style

Wood Species  
Maple .....5A

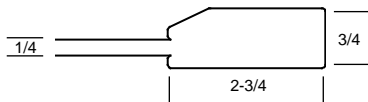
Modification ZA3 may be used on this door style to switch to a 3/8" thick, solid wood, reverse raised panel, if desired.  
+% premium



Top Drawer - 5-piece Standard



Lower Drawers - 5-piece Flat Standard



This door style matches Soho door style in Signature.



## HARBOR (HB)

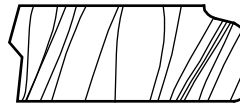
Full Overlay Styling  
Available in Cherry (HBC), Maple (HBM), Hickory (HBH), Rustic Hickory (HBRH)

Wood Species  
Cherry ..... HBC  
Maple ..... HBM  
Hickory ..... HBH  
Rustic Hickory ..HBRH

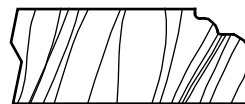
### Edge Profiles Available



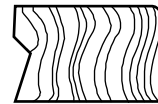
Shaker (Standard)



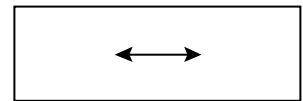
Classic (OPT #642)



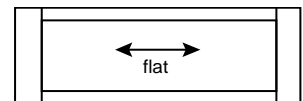
Designer (OPT #640)



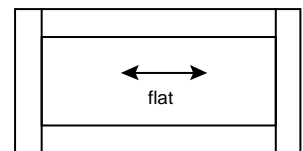
Square (OPT #637)



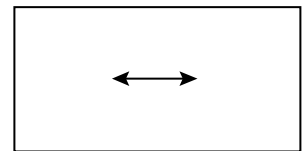
Top Drawer - 1-piece Standard



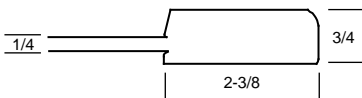
Top Drawer - 5-piece (OPT#520, \$\$/df)



Lower Drawers - 5-piece Flat (OPT#520, \$\$/df)



Lower Drawers - 1-piece Standard

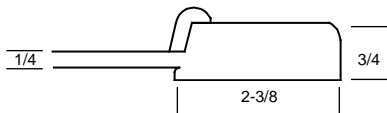


Modification ZA3 may be used on this door style to switch to a 3/8" thick, solid wood, reverse raised panel, if desired.  
+% premium

This door style matches Shakertown-V door style in Signature.



# Lifestyle Door Styles



## HAYWOOD MAPLE (HYM)

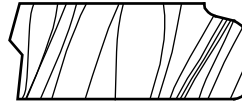
Full Overlay Styling

Wood Species  
Maple .....HYM

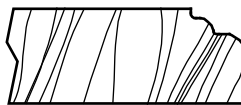
### Edge Profiles Available



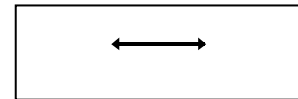
Shaker (Standard)



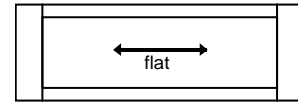
Classic (OPT #642)



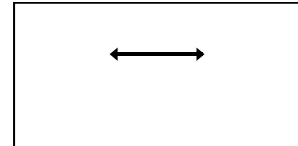
Designer (OPT #640)



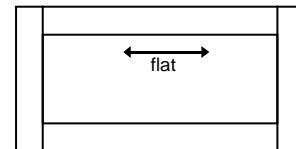
Top Drawer - 1-piece Standard



Top Drawer - 5-piece Flat (OPT#520, \$\$/df)



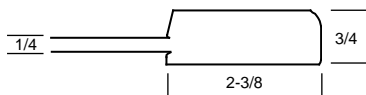
Lower Drawers - 1-piece Standard



Lower Drawers - 5-piece Flat (OPT#520, \$\$/df)

Modification ZA3 may be used on this door style to switch to a 3/8" thick, solid wood, reverse raised panel, if desired. +% premium

This door style matches Cambridge door style in Signature.



## HOFFMAN (HF)

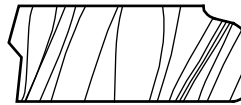
Partial Overlay Styling  
Available in Maple (HFM). Hickory (HFH), Rustic Hickory (HFRH)

Wood Species  
Maple ..... HFM  
Hickory ..... HFH  
Rustic Hickory .. HFRH

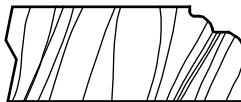
### Edge Profiles Available



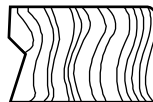
Shaker (Standard)



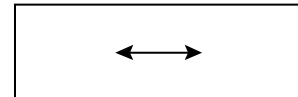
Classic (OPT #642)



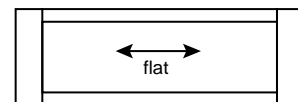
Designer (OPT #640)



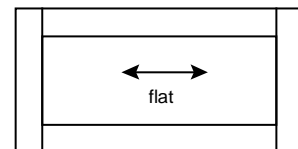
Square (OPT #637)



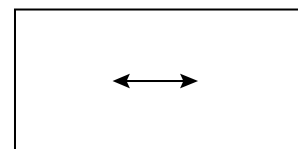
Top Drawer - 1-piece Standard



Top Drawer - 5-piece Flat (OPT#520, \$\$/df)



Lower Drawers - 5-piece Flat (OPT#525, \$\$/df)



Lower Drawers - 1-piece Standard

Modification ZA3 may be used on this door style to switch to a 3/8" thick, solid wood, reverse raised panel, if desired. +% premium

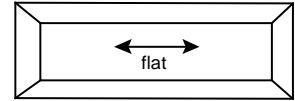
This door style matches Pleasant Hill door style in Signature.

LIFESTYLE

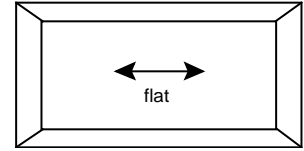


## KENNEDY MAPLE (KE) Full Overlay Styling

Wood            ABBR  
Species  
Maple ..... KE



Top Drawer - 5-piece  
Standard



Lower Drawers -  
5-piece Flat  
Standard



Modification ZA3 may be used on this door style to switch to a 3/8" thick, solid wood, reverse raised panel, if desired.  
+% premium

This door style matches Lexington door style in Signature.



# Lifestyle Door Styles



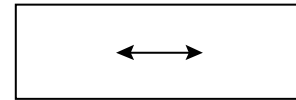
**METRO (MT)**  
Full Overlay Styling  
High Density Fiberboard/Maple Components  
(Available in painted finished only)

Wood Species ABBR  
HDF/Maple..... MT

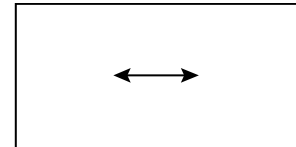
Edge Profile Available



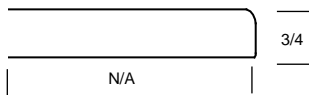
Shaker (Standard)



Top Drawer - 1-piece Standard



Lower Drawers - 1-piece Standard



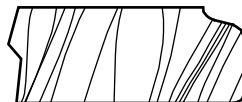
This door style matches Manhattan door style in Signature.



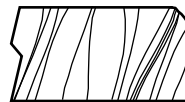
**MORGAN (MG)**  
Full Overlay Styling  
Available in Maple (MGM),  
Cherry (MGC), Oak (MGO)

Wood Species ABBR  
Cherry.....MGC  
Maple.....MGM  
Oak.....MGO

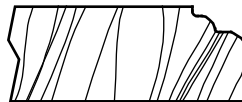
Edge Profiles Available



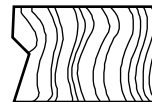
Classic (Standard)



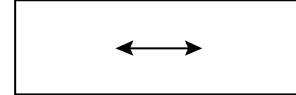
Shaker (OPT #641)



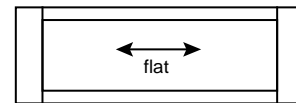
Designer (OPT #640)



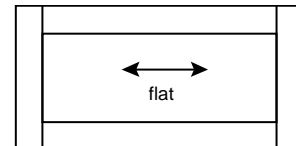
Square (OPT #637)



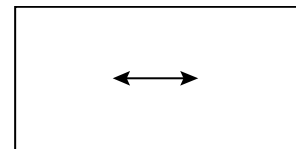
Top Drawer - 1-piece Standard



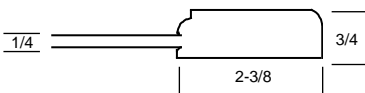
Top Drawer - 5-piece (OPT#520, \$\$/df)



Lower Drawers - 5-piece Flat (OPT#525, \$\$/df)



Lower Drawers - 1-piece Standard



Modification ZA3 may be used on this door style to switch to a 3/8" thick, solid wood, reverse raised panel, if desired. +% premium

This door style matches Plantation door style in Signature.

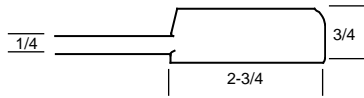
LIFESTYLE

# Lifestyle Door Styles



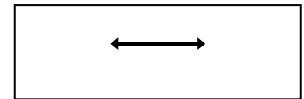
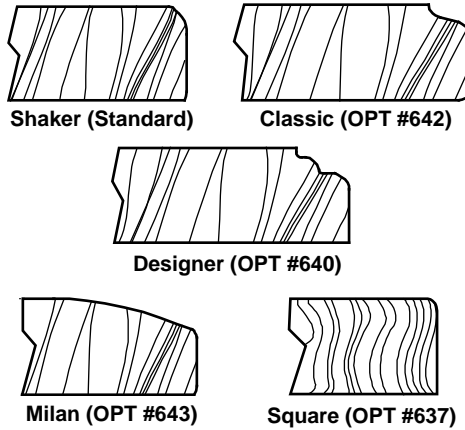
## REVERE (RR) Full Overlay Styling Available in Hickory (RRH), Maple (RRM), and Rustic Hickory (RRRH)

Wood Species ABBR  
Maple ..... RRM  
Hickory ..... RRH  
Rustic Hickory ..RRRH

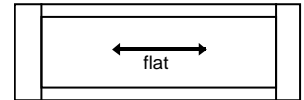


Modification ZA3 may be used on this door style to switch to a 3/8" thick, solid wood, reverse raised panel, if desired.  
+% premium

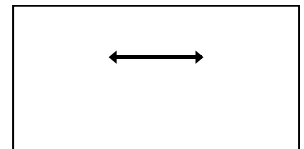
### Edge Profiles Available



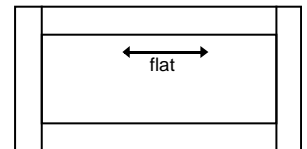
Top Drawer - 1-piece Standard



Top Drawer - 5-piece (OPT#520, \$\$/df)



Lower Drawers - 1-piece Standard



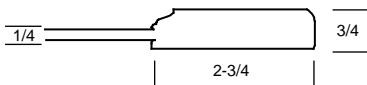
Lower Drawers - 5-piece Flat (OPT#520, \$\$/df)

This door style matches Boston door style in Signature.



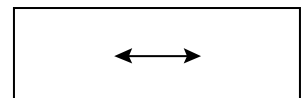
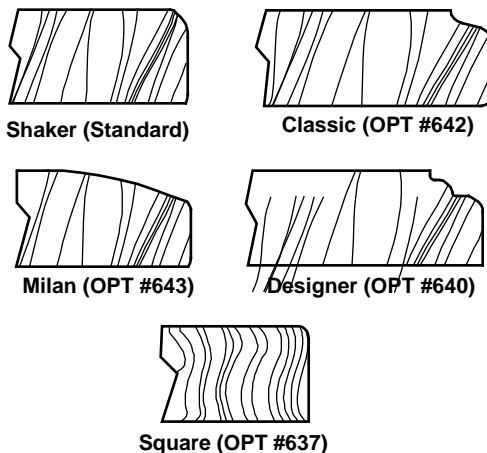
## WABASH (WAM) Partial Overlay Styling

Wood Species ABBR  
Maple ..... WAM

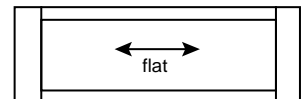


Modification ZA3 may be used on this door style to switch to a 3/8" thick, solid wood, reverse raised panel, if desired.  
+% premium

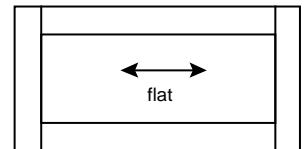
### Edge Profiles Available



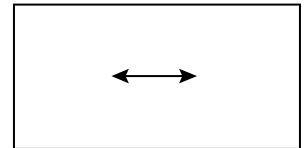
Top Drawer - 1-piece Standard



Top Drawer - 5-piece (OPT#520, \$\$/df)



Lower Drawers - 5-piece Flat (Option #520, \$\$/df)



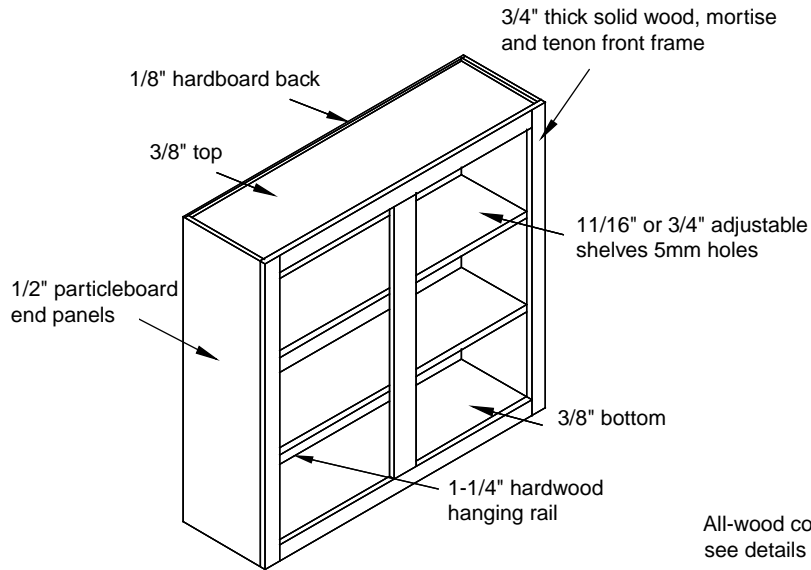
Lower Drawers - 1-piece Standard

This door style matches Winchester door style in Signature.

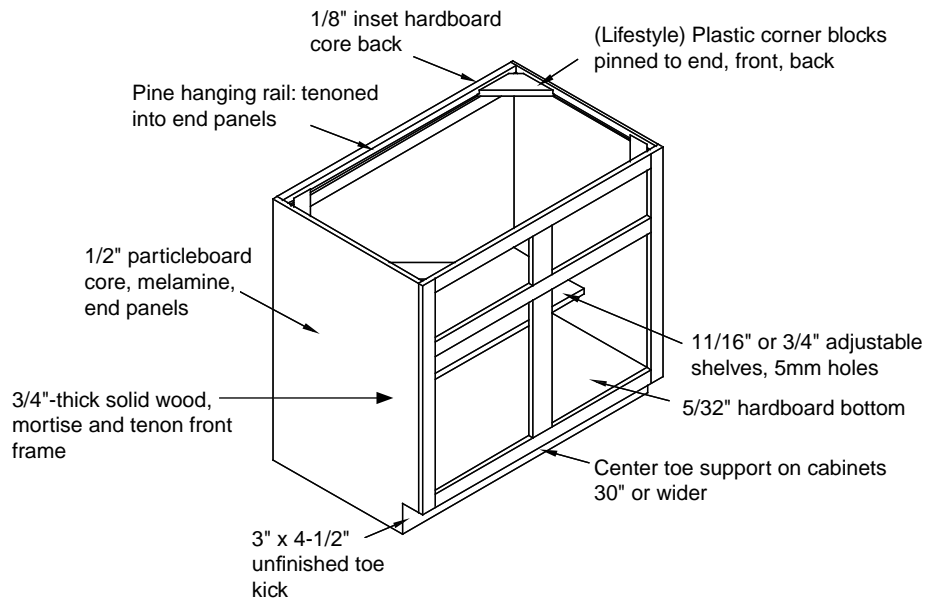
# LIFESTYLE SPECIFICATIONS

## Lifestyle Series Case Construction

### Wall



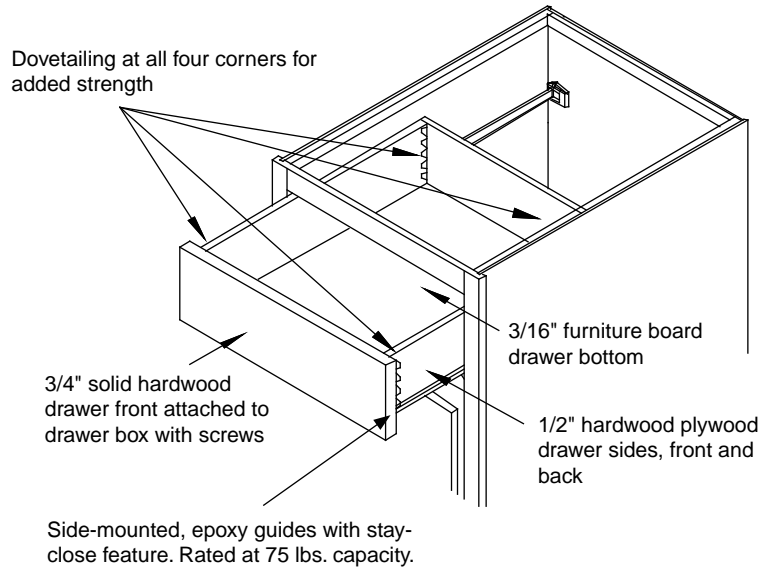
### Base



# LIFESTYLE SPECIFICATIONS

## Lifestyle Series Standard Drawer Specifications

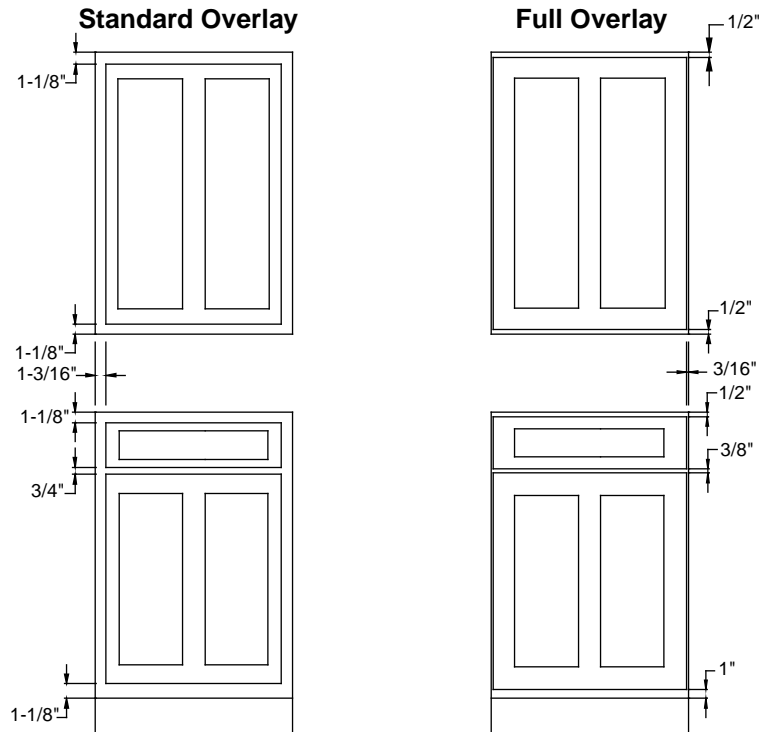
<b>LIFESTYLE DRAWER UPGRADE OPTIONS</b>
<p><b>OPT #307</b> Change to Signature wood drawer and Blum tandem edge, 7/8 extension guide with soft-close (+\$\$\$/dwr)</p>
<p><b>OPT #305</b> Change to Signature wood drawer and Blum tandem plus full extension guides with soft-close. (+\$\$\$/dwr). Available in 24", 21", and 18" deep cabinets.</p>



## Lifestyle Series Door Styling – Reveals And Construction

Lifestyle door styles are manufactured as standard overlay or full overlay construction. The reveals (areas of exposed face frame surrounding doors and drawer fronts) are different depending on the door style selected.

Door dimensions (drawer front dimension, if applicable) varies with the height of wall, base, vanity, tall or custom cabinets, but the reveal remains constant.



Butt doors: The gap between butt doors is 3/16". Hinges may be adjusted to close the gap even farther.



# Finishes

STAINED FINISHES	WOOD SPECIES ✓ = FINISH AVAILABLE N/A - NOT AVAILABLE				*Available Glazes
	CHERRY	HICKORY	MAPLE	OAK	+% UPCHARGE
AUTUMN	✓	✓	✓	✓	Ebony, Mocha
BARNWOOD	✓	✓	✓	✓	Ebony, Mocha
CINNAMON	✓	N/A	N/A	N/A	Ebony, Mocha
COCOA	N/A	N/A	✓	N/A	Ebony, Mocha
COTTONWOOD	✓	✓	✓	✓	Ebony, Mocha
DRIFTWOOD	✓	✓	✓	✓	Ebony, Mocha
FENNEL	✓	✓	✓	✓	Ebony, Mocha
HARVEST	N/A	N/A	✓	N/A	Ebony, Mocha
HAZELNUT	✓	✓	✓	✓	Ebony
HONEY	✓	✓	✓	✓	Ebony, Mocha
IRONWOOD	✓	✓	✓	✓	Ebony
MOLASSES	N/A	N/A	✓	N/A	Ebony
NATURAL	✓	✓	✓	✓	Ebony, Mocha
PECAN	✓	✓	✓	✓	Ebony, Mocha
PEPPERCORN	✓	✓	✓	✓	Ebony, Mocha
SABLE	✓	✓	✓	✓	Ebony, Mocha
SPICE	✓	N/A	✓	N/A	Ebony, Mocha
STONE	N/A	N/A	✓	N/A	Ebony
SUEDE	N/A	N/A	✓	N/A	Ebony, Mocha
WHEAT	✓	N/A	✓	N/A	Ebony, Mocha

\*Glaze accents are applied in the hangup areas of doors, drawer fronts, and some trim items. Designer edge may be required for glazed accents on certain door styles.

DISTRESSED STAINS (+10% UPCHARGE)	CHERRY	HICKORY	MAPLE	OAK
DISTRESSED BARNWOOD	✓	✓	✓	✓
DISTRESSED COTTONWOOD	✓	✓	✓	✓
DISTRESSED DRIFTWOOD	✓	✓	✓	✓
DISTRESSED IRONWOOD	✓	✓	✓	✓

• Physical distressing, including dents, artificial wood splits, and over sanding of corners and edges is done to doors, drawer fronts, frames, end panels, and some trim items.

LIFESTYLE





STANDARD PAINTS (+% UPCHARGE)  <i>Available on all woods.</i>	PAINTED FINISH ACCENTS		
	GLAZES (+% UPCHARGE)	HIGHLIGHTS (+% UPCHARGE)	DISTRESSING (+% UPCHARGE)
	Painted finish accents upcharge is the single highest percentage, not cumulative.		
ARGOS	<i>Ebony, Mocha</i>	<i>Chocolate, Smoke, Umber</i>	<i>Aged, Rub-thru</i>
BISTRO	<i>Ebony, Mocha</i>	<i>Chocolate, Smoke, Umber</i>	<i>Aged, Rub-thru</i>
BLACK	<i>Not Available</i>	<i>Smoke, Umber</i>	<i>Aged, Rub-thru</i>
CLOUD	<i>Ebony, Mocha</i>	<i>Chocolate, Smoke, Umber</i>	<i>Aged, Rub-thru</i>
CREAMY	<i>Ebony, Mocha</i>	<i>Chocolate, Smoke, Umber</i>	<i>Aged, Rub-thru</i>
DUSK	<i>Ebony</i>	<i>Smoke</i>	<i>Aged, Rub-thru</i>
GALE FORCE	<i>Ebony</i>	<i>Chocolate, Smoke</i>	<i>Aged, Rub-thru</i>
INDUSTRIAL GREY	<i>Ebony</i>	<i>Smoke</i>	<i>Aged, Rub-thru</i>
PERFECT GREY	<i>Not Available</i>	<i>Smoke</i>	<i>Aged, Rub-thru</i>
STORM	<i>Not Available</i>	<i>Smoke</i>	<i>Aged, Rub-thru</i>
URBAN DREAM	<i>Ebony</i>	<i>Smoke</i>	<i>Aged, Rub-thru</i>
WHITE	<i>Ebony, Mocha</i>	<i>Chocolate, Smoke, Umber</i>	<i>Aged, Rub-thru</i>

- Glazed accent color consists of thick lines done to hangup areas of doors, drawer fronts, and some trim items. Designer edge may be required for glazed finishes on certain door styles.
- Highlight accent color consists of thin opaque lines done to hangup areas of doors, drawer fronts, and some trim items. Designer edge may be required for highlight finishes on certain door styles.
- Distressed paints include rub-thru (light sanding of edges and corners to expose raw wood) and aged (heavier sanding of corners and physical denting of painted areas to expose raw wood). Distressed paint process is performed on doors and drawer fronts only. Distressing elements may be combined with glazes or highlights. We recommend a highlight accent color also be applied to distressed paints in order to slightly darken the exposed raw wood.
- Mist and Glaze Accents. Haas offers a variety of multi-step finish processes. These processes can create artistic variations from piece to piece inside the same kitchen. This is acceptable as a characteristic of the finishing process and is not to be considered reason for replacement. Additionally, external elements (e.g., cigarette smoke, grease) can cause slight variations and are not to be considered reason for replacement.

**THIS PAGE IS INTENTIONALLY LEFT BLANK.**